



5N301 Medinah Rd  
Addison IL 60101

## REQUEST FOR PERMIT

**To:** Village of Hinsdale  
Dan Deeter, Village Engineer  
19 E Chicago Av  
Hinsdale, IL 60521

Comcast Application No.: RSS-JB3321  
Village No.: \_\_\_\_\_  
Expires On: \_\_\_\_\_

Dear Mr. Deeter,

Application is hereby submitted by Comcast & RS Service Systems for permission to perform the work as specified below:

To install new CATV cable at a depth of 36" min along the directional bore line as shown on the attached drawing.

### REASON FOR WORK:

To install new CATV cable. New CATV cable will be installed between an existing CATV pedestal located on the South R.O.W. of Maple Street and a new CATV pedestal located in the rear easement of 123 Post Circle as shown in the drawing. All CATV cable will be installed underground using directional boring. **AMENDMENT: cable will run on the east side of Garfield Street.**

SEE ATTACHED DRAWING FOR MORE INFORMATION.

**Note:** All restoration will conform to the specifications required by the Village of Hinsdale, IL  
**Restoration to be completed within 14 working days of installation.**

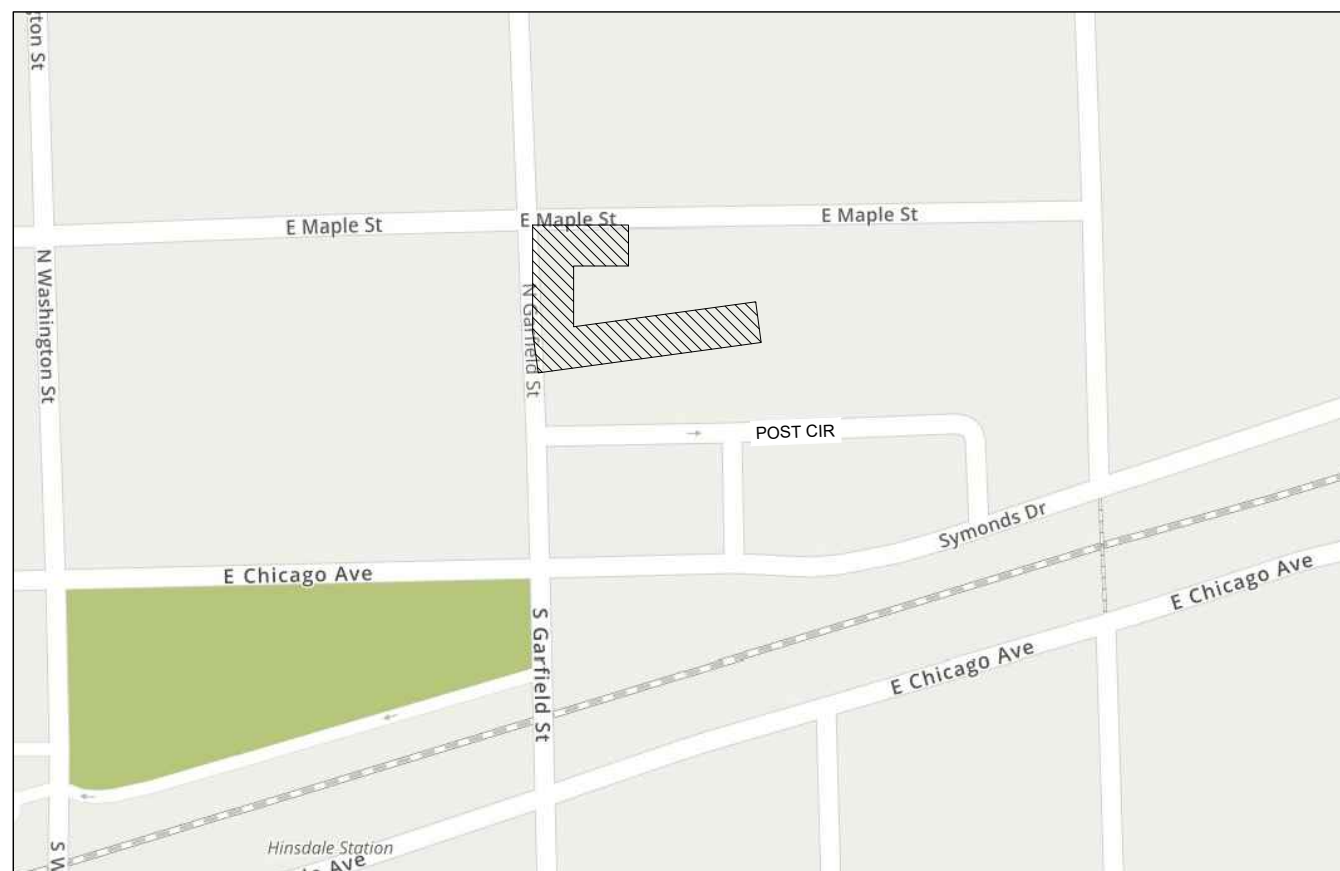
Permit Requested By: Adriana Candia, COMCAST Construction Specialist Date: 8/20/19

Permit Granted By: \_\_\_\_\_ Date: \_\_\_\_\_

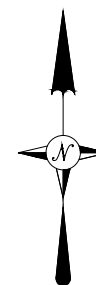
Contact:	Phone:	email:
Adriana Candia, COMCAST Const. Specialist 5N301 Medinah Rd, Addison, IL 60101	224.229.6594	<a href="mailto:adriana_candia@comcast.com">adriana_candia@comcast.com</a>
Mark Walski, RS Service Systems 38 Forestwood Dr, Romeoville, IL 60446	815.293.9393 815.719.4645	<a href="mailto:markw@rs-services.com">markw@rs-services.com</a>
Olivia Carlin, ESPO Engineering 845 Midway Dr, Willowbrook, IL 60527-5549	630.522.3024	<a href="mailto:ocarlin@espocorp.com">ocarlin@espocorp.com</a>

# VILLAGE OF HINSDALE PERMIT DRAWING 123 POST CIR HINSDALE, IL

## SITE MAP



NOT TO SCALE



## LEGEND

### SYMBOLS

⊗ JOINT POLE	⊗ TRANSFORMER POLE
× POWER POLE	○ TELEPHONE POLE
● CATV POLE	⊗ CATV POWER SUPPLY
⊞ CATV VAULT	⊞ TRAFFIC CONTROL VAULT
⊞ TELCO VAULT	⊞ UNMARKED VAULT
□ CATV PED	⊞ BORE/SPLICE PIT
■ CATV LOCKBOX	⊞ UNMARKED MANHOLES
⊞ FIRE HYDRANT	⊞ CATV MANHOLE
⊞ CATCH BASIN	⊞ GAS MARKER (Indicate Ownership)
⊞ SEWER DRAIN	⊞ RIGHT-OF-WAY MARKER (Bench Mark)
⊞ WATER VALVE	⊞ TELEPHONE MANHOLE (Indicate Ownership)
⊞ GAS VALVE	⊞ TREE
⊞ CULVERT PIPE	⊞ BUSH
⊞ TREE	⊞ TELCO PED
⊞ BUSH	⊞ TRANSFORMER
⊞ TELCO PED	⊞ MAIL BOX
⊞ TRANSFORMER	⊞ FIBER MARKER
⊞ MAIL BOX	⊞ GAS METER
⊞ FIBER MARKER	⊞ ROAD SIGN
⊞ GAS METER	⊞ STREET LIGHT
⊞ ROAD SIGN	⊞ ELECTRIC VAULT/PED/METER
⊞ STREET LIGHT	⊞ RAILROAD CROSSING GATE
⊞ ELECTRIC VAULT/PED/METER	
⊞ RAILROAD CROSSING GATE	

### LINES

— — — — —	CENTER LINE
- - - - -	RIGHT-OF-WAY LINE
— — — — —	PROPERTY LINE
— · — · — ·	UTILITY EASEMENT
— AER — AER —	OVERHEAD CABLE
— DB — DB — DB —	DIRECTIONAL BORE CABLE
— TR — TR — TR —	TRENCH CABLE
— EX — EX — EX —	EXISTING PIPE/CONDUIT
— HB — HB — HB —	HAND-BURY CABLE
— W — W — W —	WATER MAIN
— S — S — S —	SANITARY SEWER
— G — G — G —	STORM SEWER MAIN
— TEL — TEL — TEL —	GAS MAIN
— TEL — TEL — TEL —	TELCO CABLE
— E — E — E —	BURIED ELECTRIC CABLE
— ○ — ○ — ○ —	FENCE



THE INFORMATION IN THIS DRAWING FILE IS PROPRIETARY AND CONFIDENTIAL AND MAY NOT BE REPRODUCED OR TRANSMITTED BY ANY MEANS OF CONVEYANCE WITHOUT WRITTEN PERMISSION FROM COMCAST.

### RS SYSTEM SERVICES, INC

38 FORESTWOOD DR, ROMEVILLE, IL 60446 ; (815) 293-9393

JOB NO.: RSS-JB3321

PROJECT TITLE: COMCAST U-GROUND COMMUNICATION CABLE COMMERCIAL

LOCATION: \_\_\_\_\_

123 POST CIR  
HINSDALE, IL

DRAWING NO. RSS-JB3321

SHEET NO. 1 OF 2

### ESPO ENGINEERING

845 MIDWAY DR WILLOWBROOK, IL 60527  
630.789.2525  
www.espocorp.com

ENG NUMBER: RSS-0619-1360

DRAWN BY: ERO DATE: 07/13/19

### ISSUED FOR PERMITTING

SCALE: 1"=50'

### REVISIONS

DATE	BY	DESCRIPTION
8/20/19	DVE	REVISED PER MUNI
-	-	-
-	-	-

DUPAGE COUNTY  
DOWNERS GROVE TWP T38N R11E  
S.W.1/4 OF S.E.1/4 OF SEC.1

### INDEX OF SHEETS

1. COVER SHEET
2. PLAN SHEET

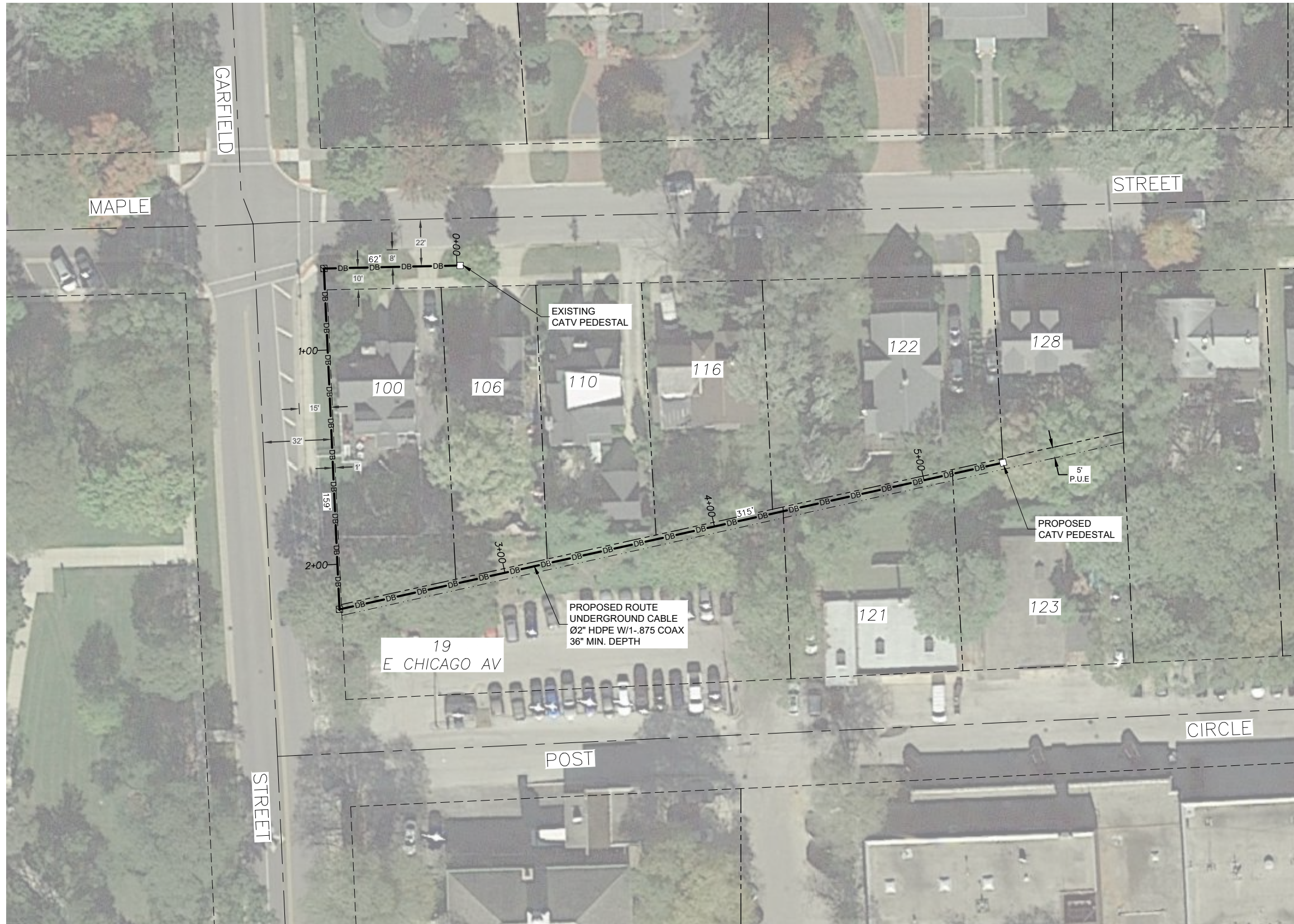
### PROJECT DESCRIPTION

PROPOSED INSTALLATION OF  
UNDERGROUND CABLE - 2"Ø  
HDPE w/1-.875 COAX @ 36" MIN.  
DEPTH BY DIRECTIONAL BORING

### PROJECT DETAIL

CABLE LENGTH (ft): 536'

COMCAST COORD: MICHAEL  
KOCHANSKI



### LEGEND

#### SYMBOLS

- |                |  |
|----------------|--|
| ⊗ JOINT POLE   | ⊗ TRANSFORMER POLE                               |
| × POWER POLE   | ○ TELEPHONE POLE                                 |
| ● CATV POLE    | ⊗ CATV POWER SUPPLY                              |
| ⊞ CATV VAULT   | ⊞ TRAFFIC CONTROL VAULT                          |
| ⊞ TELCO VAULT  | ⊞ UNMARKED VAULT                                 |
| □ CATV PED     | ⊞ BORE/SPLICE PIT                                |
| ■ CATV LOCKBOX | ⊞ UNMARKED MANHOLES                              |
| ⊕ FIRE HYDRANT | ⊞ CATV MANHOLE                                   |
| ⊕ CATCH BASIN  | ⊞ GAS MARKER<br>(Indicate Ownership)             |
| ⊕ SEWER DRAIN  | ⊞ RIGHT-OF-WAY MARKER<br>(Bench Mark)            |
| ⊕ WATER VALVE  | ⊞ TELEPHONE MANHOLE<br>(Indicate Ownership)      |
| ⊕ GAS VALVE    | ⊞ SEWER MANHOLE<br>(Indicate Sanitary/Storm)     |
| ⊕ CULVERT PIPE | ⊞ WATER MANHOLE<br>(Indicate Ownership e.g. DWC) |
| ⊕ TREE         | ⊞ AIR CONDITIONER                                |
| ⊕ BUSH         | ⊞ TRAFFIC SIGNAL LIGHT                           |
| ⊞ TELCO PED    | ⊞ ROAD SIGN                                      |
| ⊞ TRANSFORMER  | ⊞ GUY AND ANCHOR                                 |
| ⊞ MAIL BOX     | ⊞ STREET LIGHT                                   |
| ⊞ FIBER MARKER | ⊞ ELECTRIC VAULT/PED/METER                       |
| ⊞ GAS METER    | ⊞ RAILROAD CROSSING GATE                         |
| ⊞ ROAD SIGN    |  |

#### LINES

- |                     |                        |
|---------------------|------------------------|
| —                   | CENTER LINE            |
| - - - -             | RIGHT-OF-WAY LINE      |
| - · - · -           | PROPERTY LINE          |
| - · - · -           | UTILITY EASEMENT       |
| — AER — AER —       | OVERHEAD CABLE         |
| — DB — DB — DB —    | DIRECTIONAL BORE CABLE |
| — TR — TR — TR —    | TRENCH CABLE           |
| — EX — EX — EX —    | EXISTING PIPE/CONDUIT  |
| — HB — HB — HB —    | HAND-BURY CABLE        |
| — W — W — W —       | WATER MAIN             |
| — S — S — S —       | SANITARY SEWER         |
| — SS — SS — SS —    | STORM SEWER MAIN       |
| — G — G — G —       | GAS MAIN               |
| — TEL — TEL — TEL — | TELCO CABLE            |
| — E — E — E —       | BURIED ELECTRIC CABLE  |
| — ○ — ○ — ○ —       | FENCE                  |



THE INFORMATION IN THIS DRAWING FILE IS PROPRIETARY AND CONFIDENTIAL AND MAY NOT BE REPRODUCED OR TRANSMITTED BY ANY MEANS OF CONVEYANCE WITHOUT WRITTEN PERMISSION FROM COMCAST.

### RS SYSTEM SERVICES, INC

38 FORESTWOOD DR, ROMEOVILLE, IL 60446 ; (815) 293-9393

JOB NO.: RSS-JB3321

PROJECT TITLE: COMCAST U-GROUND COMMUNICATION CABLE COMMERCIAL

LOCATION: \_\_\_\_\_

123 POST CIR  
HINSDALE, IL

DRAWING NO.: RSS-JB3321

SHEET NO.: 2 OF 2

### ESPO ENGINEERING

845 MIDWAY DR WILLOWBROOK, IL 60527  
630.789.2525  
www.espocorp.com

ENG NUMBER: RSS-0619-1360

DRAWN BY: ERO DATE: 07/13/19

### ISSUED FOR PERMITTING

SCALE: 1"=50'

#### REVISIONS

DATE	BY	DESCRIPTION
8/20/19	DVE	REVISED PER MUNI
-	-	-
-	-	-

