



5N301 Medinah Rd
Addison IL 60101

REQUEST FOR PERMIT

To: Village of Hinsdale
Dan Deeter, Village Engineer
19 E Chicago Av
Hinsdale, IL 60521

Comcast Application No.: RSS-19882030
Village No.: _____
Expires On: _____

Dear Mr. Deeter,

Application is hereby submitted by Comcast & RS Service Systems for permission to perform the work as specified below:

To install new CATV cable at a depth of 36" min along the directional bore line as shown on the attached drawing.

REASON FOR WORK:

To install new CATV cable. New CATV cable will be installed between an existing utility pole in parking lot of Lincoln Street and building at 100 Chestnut Street as shown in the drawing. All CATV cable will be installed underground using directional boring. Permit to include road bore underneath Lincoln and Chestnut Streets.

SEE ATTACHED DRAWING FOR MORE INFORMATION.

Note: All restoration will conform to the specifications required by the Village of Hinsdale, IL
Restoration to be completed within 14 working days of installation.

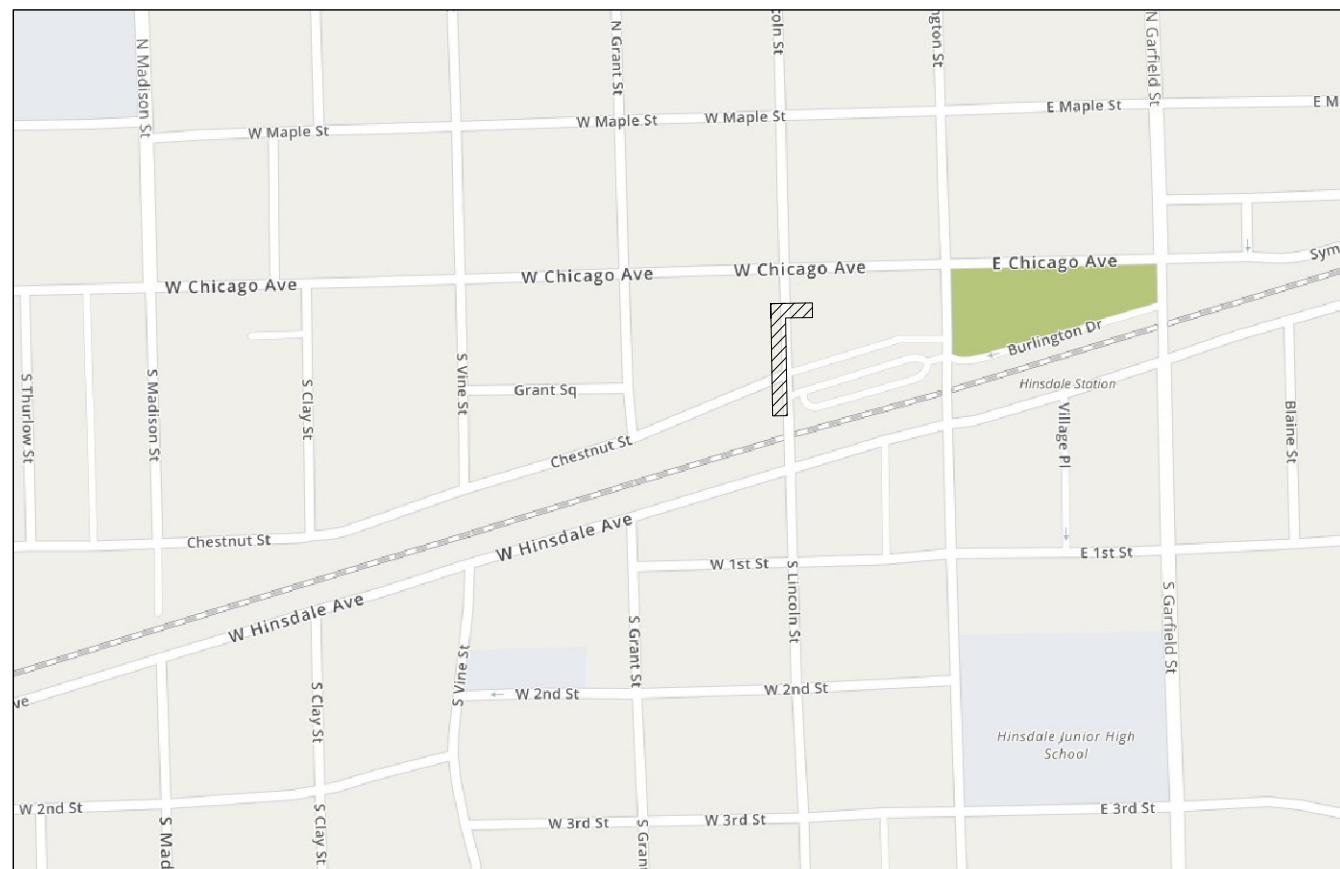
Permit Requested By: Adriana Candia, COMCAST Construction Specialist Date: 9/4/18

Permit Granted By: _____ Date: _____

Contact:	Phone:	email:
Adriana Candia, COMCAST Const. Specialist 5N301 Medinah Rd, Addison, IL 60101	224.229.6594	adriana_candia@comcast.com
Mark Walski, RS Service Systems 38 Forestwood Dr, Romeoville, IL 60446	815.293.9393	markw@rs-services.com
Olivia Carlin, ESPO Engineering 845 Midway Dr, Willowbrook, IL 60527-5549	630.522.3024	ocarlin@espocorp.com

VILLAGE OF HINSDALE PERMIT DRAWING 100 CHESTNUT ST HINSDALE, IL

SITE MAP



NOT TO SCALE



LEGEND

SYMBOLS

⊗ JOINT POLE	⊗ TRANSFORMER POLE
× POWER POLE	○ TELEPHONE POLE
● CATV POLE	⊗ CATV POWER SUPPLY
⊞ CATV VAULT	⊞ TRAFFIC CONTROL VAULT
⊞ TELCO VAULT	⊞ UNMARKED VAULT
□ CATV PED	⊞ BORE/SPLICE PIT
■ CATV LOCKBOX	⊞ UNMARKED MANHOLES
⊙ FIRE HYDRANT	⊞ CATV MANHOLE
⊕ CATCH BASIN	⊞ GAS MARKER (Indicate Ownership)
⊙ SEWER DRAIN	⊞ RIGHT-OF-WAY MARKER (Bench Mark)
⊙ WATER VALVE	⊞ TELEPHONE MANHOLE (Indicate Ownership)
⊙ GAS VALVE	⊞ SEWER MANHOLE (Indicate Sanitary/Storm)
⊞ CULVERT PIPE	⊞ WATER MANHOLE (Indicate Ownership e.g. DWC)
⊞ TREE	⊞ AIR CONDITIONER
⊞ BUSH	⊞ TRAFFIC SIGNAL LIGHT
⊞ TELCO PED	⊞ GUY AND ANCHOR
⊞ TRANSFORMER	⊞ STREET LIGHT
⊞ MAIL BOX	⊞ ELECTRIC VAULT/PED/METER
⊞ FIBER MARKER	⊞ RAILROAD CROSSING GATE
⊞ GAS METER	
⊞ ROAD SIGN	

LINES

— — — — —	CENTER LINE
- - - - -	RIGHT-OF-WAY LINE
— — — — —	PROPERTY LINE
— — — — —	UTILITY EASEMENT
— — — — —	CURB LINE
— — — — —	OVERHEAD CABLE
— — — — —	DIRECTIONAL BORE CABLE
— — — — —	TRENCH CABLE
— — — — —	EXISTING PIPE/CONDUIT
— — — — —	WATER MAIN
— — — — —	SANITARY SEWER
— — — — —	STORM SEWER MAIN
— — — — —	GAS MAIN
— — — — —	TELCO CABLE
— — — — —	BURIED ELECTRIC CABLE
— — — — —	FENCE



THE INFORMATION IN THIS DRAWING FILE IS PROPRIETARY AND CONFIDENTIAL AND MAY NOT BE REPRODUCED OR TRANSMITTED BY ANY MEANS OF CONVEYANCE WITHOUT WRITTEN PERMISSION FROM COMCAST.

RS SYSTEM SERVICES, INC

38 FORESTWOOD DR, ROMEVILLE, IL 60446 : (815) 293-9393

JOB NO.: RSS-19882030

PROJECT TITLE: COMCAST U-GROUND COMMUNICATION CABLE

COMMERCIAL

LOCATION: _____

100 CHESTNUT ST
HINSDALE, IL

DRAWING NO. RSS-19882030

SHEET NO. 1 OF 2

ESPO ENGINEERING

845 MIDWAY DR WILLOWBROOK, IL 60527
630.789.2525
www.espcorp.com

ENG NUMBER: RSS-0818-B982

DRAWN BY: JPO DATE: 8/31/18

ISSUED FOR PERMITTING

SCALE: 1"=50'

REVISIONS

DATE	BY	DESCRIPTION
—	—	—
—	—	—
—	—	—

DuPAGE COUNTY
DOWNERS GROVE TWP T38N R11E
N.W.1/4 OF N.W.1/4 OF SEC. 12

INDEX OF SHEETS

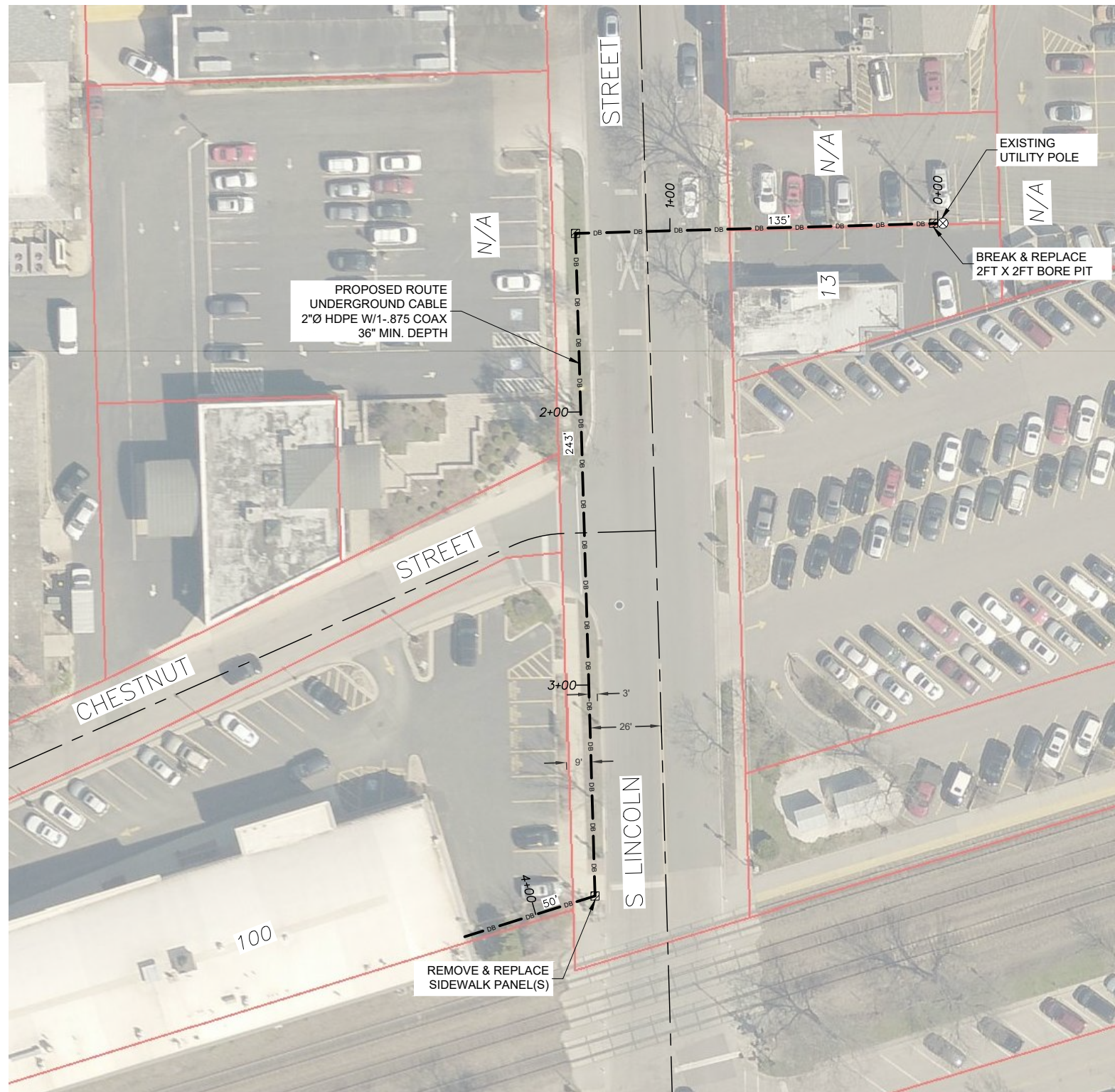
1. COVER SHEET
2. PLAN SHEET

PROJECT DESCRIPTION

PROPOSED INSTALLATION OF
UNDERGROUND CABLE -
2"Ø HDPE w/1-.875 COAX
@ 36" MIN. DEPTH
BY DIRECTIONAL BORING

PROJECT DETAIL

CABLE LENGTH (ft): 428
NODE #: N/A
COMCAST COORD: ROBERTO
MEDINA



LEGEND

SYMBOLS

- | | |
|----------------------------|--|
| ⊗ JOINT POLE | ⊗ TRANSFORMER POLE |
| × POWER POLE | ○ TELEPHONE POLE |
| ● CATV POLE | ⊗ CATV POWER SUPPLY |
| ⊞ CATV VAULT | ⊞ TRAFFIC CONTROL VAULT |
| ⊞ TELCO VAULT | ⊞ UNMARKED VAULT |
| □ CATV PED | ⊞ BORE/SPLICE PIT |
| ■ CATV LOCKBOX | ⊞ UNMARKED MANHOLES |
| ⊙ FIRE HYDRANT | ⊞ CATV MANHOLE |
| ⊕ CATCH BASIN | ⊞ GAS MARKER (Indicate Ownership) |
| ⊙ SEWER DRAIN | ⊞ RIGHT-OF-WAY MARKER (Bench Mark) |
| ⊙ WATER VALVE | ⊞ TELEPHONE MANHOLE (Indicate Ownership) |
| ⊙ GAS VALVE | ⊞ TREE |
| ⊙ CULVERT PIPE | ⊞ BUSH |
| ⊙ TREE | ⊞ TELCO PED |
| ⊙ BUSH | ⊞ TRANSFORMER |
| ⊞ TELCO PED | ⊞ MAIL BOX |
| ⊞ TRANSFORMER | ⊞ FIBER MARKER |
| ⊞ MAIL BOX | ⊞ GAS METER |
| ⊞ FIBER MARKER | ⊞ ROAD SIGN |
| ⊞ GAS METER | ⊞ STREET LIGHT |
| ⊞ ROAD SIGN | ⊞ ELECTRIC VAULT/PED/METER |
| ⊞ STREET LIGHT | ⊞ RAILROAD CROSSING GATE |
| ⊞ ELECTRIC VAULT/PED/METER | |
| ⊞ RAILROAD CROSSING GATE | |

LINES

- | | |
|---------|------------------------|
| — | CENTER LINE |
| - - - - | RIGHT-OF-WAY LINE |
| --- | PROPERTY LINE |
| --- | UTILITY EASEMENT |
| --- | CURB LINE |
| — AER — | OVERHEAD CABLE |
| — DB — | DIRECTIONAL BORE CABLE |
| — TR — | TRENCH CABLE |
| — EX — | EXISTING PIPE/CONDUIT |
| — W — | WATER MAIN |
| — S — | SANITARY SEWER |
| — G — | STORM SEWER MAIN |
| — G — | GAS MAIN |
| — TEL — | TELCO CABLE |
| — E — | BURIED ELECTRIC CABLE |
| — ○ — | FENCE |



THE INFORMATION IN THIS DRAWING FILE IS PROPRIETARY AND CONFIDENTIAL AND MAY NOT BE REPRODUCED OR TRANSMITTED BY ANY MEANS OF CONVEYANCE WITHOUT WRITTEN PERMISSION FROM COMCAST.

RS SYSTEM SERVICES, INC

38 FORESTWOOD DR, ROMEVILLE, IL 60446 : (815) 293-9393

JOB NO.: RSS-19882030
 PROJECT TITLE: COMCAST U-GROUND COMMUNICATION CABLE
COMMERCIAL

LOCATION: 100 CHESTNUT ST
HINSDALE, IL

DRAWING NO. RSS-19882030
 SHEET NO. 2 OF 2

ESPO ENGINEERING

845 MIDWAY DR WILLOWBROOK, IL 60527
 630.789.2525
 www.espcorp.com

ENG NUMBER: RSS-0818-B982

DRAWN BY: JPO DATE: 8/31/18

ISSUED FOR PERMITTING

SCALE: 1"=50'

REVISIONS

DATE	BY	DESCRIPTION
-	-	-
-	-	-
-	-	-

