



5N301 Medinah Rd
Addison IL 60101

REQUEST FOR PERMIT

To: Village of Hinsdale
Dan Deeter, Village Engineer
19 E Chicago Av
Hinsdale, IL 60521

Comcast Application No.: DCS-760917NS-M1
Village No.: _____
Expires On: _____

Dear Mr. Deeter,

Application is hereby submitted by Comcast & Directional Construction Services for permission to perform the work as specified below:

To install new CATV cable at a depth of 36" min along the directional bore line as shown on the attached drawing.

REASON FOR WORK:

To install new CATV cable between two (2) existing utility poles and two (2) new CATV vaults located along the East R.O.W. of Monroe Street between Hickory Street and Chestnut Street as shown on the drawing. All CATV cable will be installed underground using directional boring. Permit to include a road bore to go underneath Maple Street and Chicago Avenue.

SEE ATTACHED DRAWING FOR MORE INFORMATION.

Note: All restoration will conform to the specifications required by the Village of Hinsdale, IL
Restoration to be completed within 14 working days of installation.

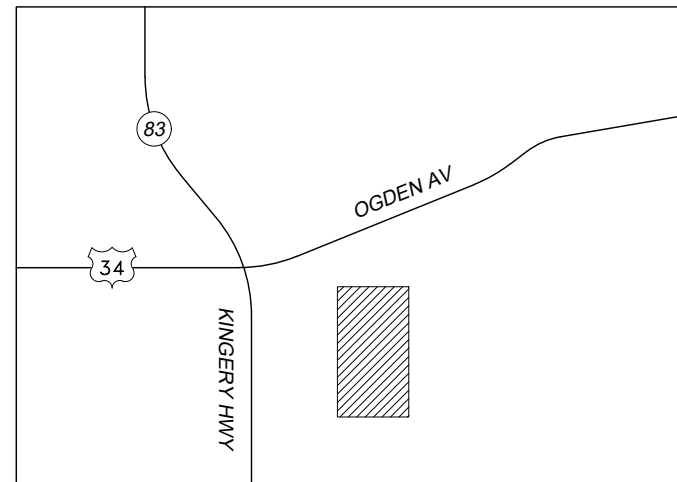
Permit Requested By: Adriana Candia, COMCAST Construction Specialist Date: 8/15/18

Permit Granted By: _____ Date: _____

Contact:	Phone:	email:
Adriana Candia, COMCAST Const. Specialist 5N301 Medinah Rd, Addison, IL 60101	224.229.6594	adriana_candia@comcast.com
Scott Jones, Directional Const. Services Inc 558 E. Burnett Rd, Island Lake, IL 60042	847.875.7153	dcsjones@gmail.com
Olivia Carlin, ESPO Engineering 845 Midway Dr, Willowbrook, IL 60527-5549	630.522.3024	ocarlin@espocorp.com

VILLAGE OF HINSDALE PERMIT DRAWINGS MONROE ST & HICKORY ST

FINDER SKETCH



NOT TO SCALE

DUPAGE COUNTY
DOWNERS GROVE TWP T38N R11E
S.E.1/4 OF S.E.1/4 OF SEC.2
N.E.1/4 OF N.E.1/4 OF SEC.11

INDEX OF SHEETS

TITLE SHEET 1
PLAN SHEETS 2-5

LEGEND

SYMBOLS

⊗ JOINT POLE	Ⓜ MAIL BOX
× POWER POLE	▬ FIBER MARKER
⊠ TRANSFORMER POLE	Ⓜ GAS MARKER (Indicate Ownership)
○ TELEPHONE POLE	Ⓜ GAS METER
● CATV POLE	Ⓜ RIGHT-OF-WAY MARKER (Bench Mark)
□ CATV PED	Ⓜ RAILROAD CROSSING GATE
▣ CATV LOCKBOX	Ⓜ ROAD SIGN
Ⓜ CATV VAULT	Ⓜ STREET LIGHT
Ⓜ TELCO VAULT	Ⓜ TRAFFIC SIGNAL LIGHT
Ⓜ TELCO PED	Ⓜ GUY AND ANCHOR
Ⓜ TRANSFORMER	Ⓜ FIRE HYDRANT
Ⓜ CATV POWER SUPPLY	Ⓜ CATCH BASIN
Ⓜ AIR CONDITIONER	Ⓜ SEWER DRAIN
Ⓜ ELECTRIC VAULT/PED/METER	Ⓜ WATER VALVE
Ⓜ TRAFFIC CONTROL VAULT	Ⓜ GAS VALVE
Ⓜ UNMARKED VAULT	Ⓜ CULVERT PIPE
Ⓜ CATV MANHOLE	Ⓜ TREE
Ⓜ SEWER MANHOLE (Indicate Sanitary/Storm)	Ⓜ BUSH
Ⓜ WATER MANHOLE (Indicate Ownership i.e. DMC)	Ⓜ HEDGES
Ⓜ UNMARKED MANHOLES	Ⓜ BORE/SPLICE PIT

LINES

— — — — —	CENTER LINE
- - - - -	RIGHT-OF-WAY LINE
— — — — —	PROPERTY LINE
— · — · — · —	UTILITY EASEMENT
— — — — —	CURB LINE
— — — — —	OVERHEAD CABLE
— · — · — · —	UNDERGROUND CABLE
— W — W — W — W — W —	WATER MAIN
— S — S — S — S — S —	SANITARY SEWER
— G — G — G — G — G —	STORM SEWER MAIN
— G — G — G — G — G —	GAS MAIN
— TEL — TEL — TEL — TEL —	TELCO CABLE
— E — E — E — E — E —	BURIED ELECTRIC CABLE
— — — — —	FENCE



THE INFORMATION IN THIS DRAWING FILE IS PROPRIETARY AND CONFIDENTIAL AND MAY NOT BE REPRODUCED OR TRANSMITTED BY ANY MEANS OF CONVEYANCE WITHOUT WRITTEN PERMISSION FROM COMCAST.

DIRECTIONAL CONSTR. SERVICES, INC
558 E. BURNETT RD, ISLAND LAKE, IL 60042 : (847) 875-7153

JOB NO.: DCS-760917NS

PROJECT TITLE: COMCAST U-GROUND COMMUNICATION CABLE
NODE SEGMENTATION

LOCATION: MONROE ST & HICKORY ST
HINSDALE, IL

DRAWING NO. DCS-760917NS-M1

NODE NO. N/A

CABLE TYPE: FIBER

SHEET NO. 1 OF 5

ESPO ENGINEERING
845 MIDWAY DR WILLIOWBROOK, IL 60527
630.789.2525
www.espcorp.com

DRAWN BY: DVE DATE: 8/14/18

APPROVED: - DATE: -

ENG NUMBER: DCS-0718-B604

ISSUED FOR PERMITTING

SCALE: 1"=50'

REVISIONS

DATE	BY	DESCRIPTION
-	-	-
-	-	-
-	-	-

LEGEND

SYMBOLS

- | | |
|---|------------------------------------|
| ⊗ JOINT POLE | Ⓜ MAIL BOX |
| × POWER POLE | ▬ FIBER MARKER |
| ⊠ TRANSFORMER POLE | ⊕ GAS MARKER (Indicate Ownership) |
| ○ TELEPHONE POLE | ⊖ GAS METER |
| ● CATV POLE | ⊙ RIGHT-OF-WAY MARKER (Bench Mark) |
| □ CATV PED | ⊗ RAILROAD CROSSING GATE |
| ▣ CATV LOCKBOX | Ⓜ ROAD SIGN |
| Ⓜ CATV VAULT | ☀ STREET LIGHT |
| Ⓜ TELCO VAULT | ☀ TRAFFIC SIGNAL LIGHT |
| Ⓜ TELCO PED | ⊕ GUY AND ANCHOR |
| Ⓜ TRANSFORMER | ⊕ FIRE HYDRANT |
| Ⓜ CATV POWER SUPPLY | ⊕ CATCH BASIN |
| Ⓜ AIR CONDITIONER | Ⓜ SEWER DRAIN |
| Ⓜ ELECTRIC VAULT/PED/METER | Ⓜ WATER VALVE |
| Ⓜ TRAFFIC CONTROL VAULT | Ⓜ GAS VALVE |
| Ⓜ UNMARKED VAULT | Ⓜ CULVERT PIPE |
| Ⓜ CATV MANHOLE | Ⓜ TREE |
| Ⓜ SEWER MANHOLE (Indicate Sanitary/Storm) | Ⓜ BUSH |
| Ⓜ WATER MANHOLE (Indicate Ownership i.e. DMC) | Ⓜ HEDGES |
| Ⓜ UNMARKED MANHOLES | Ⓜ BORE/SPLICE PIT |

LINES

- | | |
|---------------------------------------|-----------------------|
| — — — — — | CENTER LINE |
| - - - - - | RIGHT-OF-WAY LINE |
| - - - - - | PROPERTY LINE |
| - - - - - | UTILITY EASEMENT |
| — — — — — | CURB LINE |
| — — — — — | OVERHEAD CABLE |
| — · — · — · — · — · — · — · — · | UNDERGROUND CABLE |
| — W — W — W — W — W — W — | WATER MAIN |
| — S — S — S — S — S — S — | SANITARY SEWER |
| — G — G — G — G — G — G — | STORM SEWER MAIN |
| — TEL — TEL — TEL — TEL — TEL — TEL — | TELCO CABLE |
| — E — E — E — E — E — E — | BURIED ELECTRIC CABLE |
| — — — — — | FENCE |



THE INFORMATION IN THIS DRAWING FILE IS PROPRIETARY AND CONFIDENTIAL AND MAY NOT BE REPRODUCED OR TRANSMITTED BY ANY MEANS OF CONVEYANCE WITHOUT WRITTEN PERMISSION FROM COMCAST.

DIRECTIONAL CONSTR. SERVICES, INC
558 E. BURNETT RD, ISLAND LAKE, IL 60042 : (847) 875-7153

JOB NO.: DCS-760917NS
PROJECT TITLE: COMCAST U-GROUND COMMUNICATION CABLE
NODE SEGMENTATION
LOCATION: MONROE ST & HICKORY ST
HINSDALE, IL
DRAWING NO. DCS-760917NS-M1
NODE NO. N/A
CABLE TYPE: FIBER
SHEET NO. 2 OF 5

ESPO ENGINEERING
845 MIDWAY DR WILLIOWBROOK, IL 60527
630.789.2525
www.espocorp.com

DRAWN BY: DVE DATE: 8/14/18
APPROVED: - DATE: -

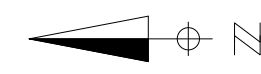
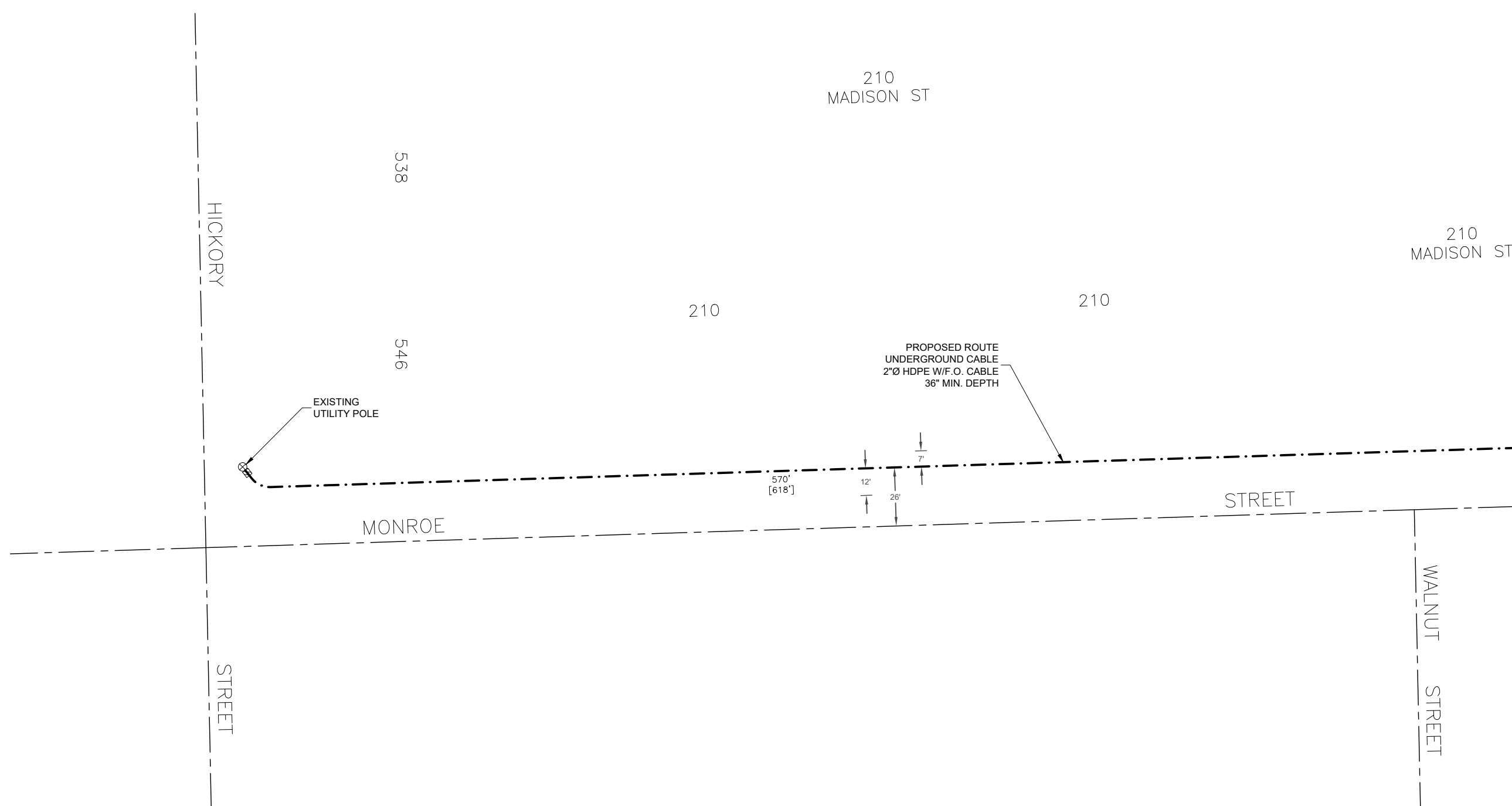
ENG NUMBER: DCS-0718-B604

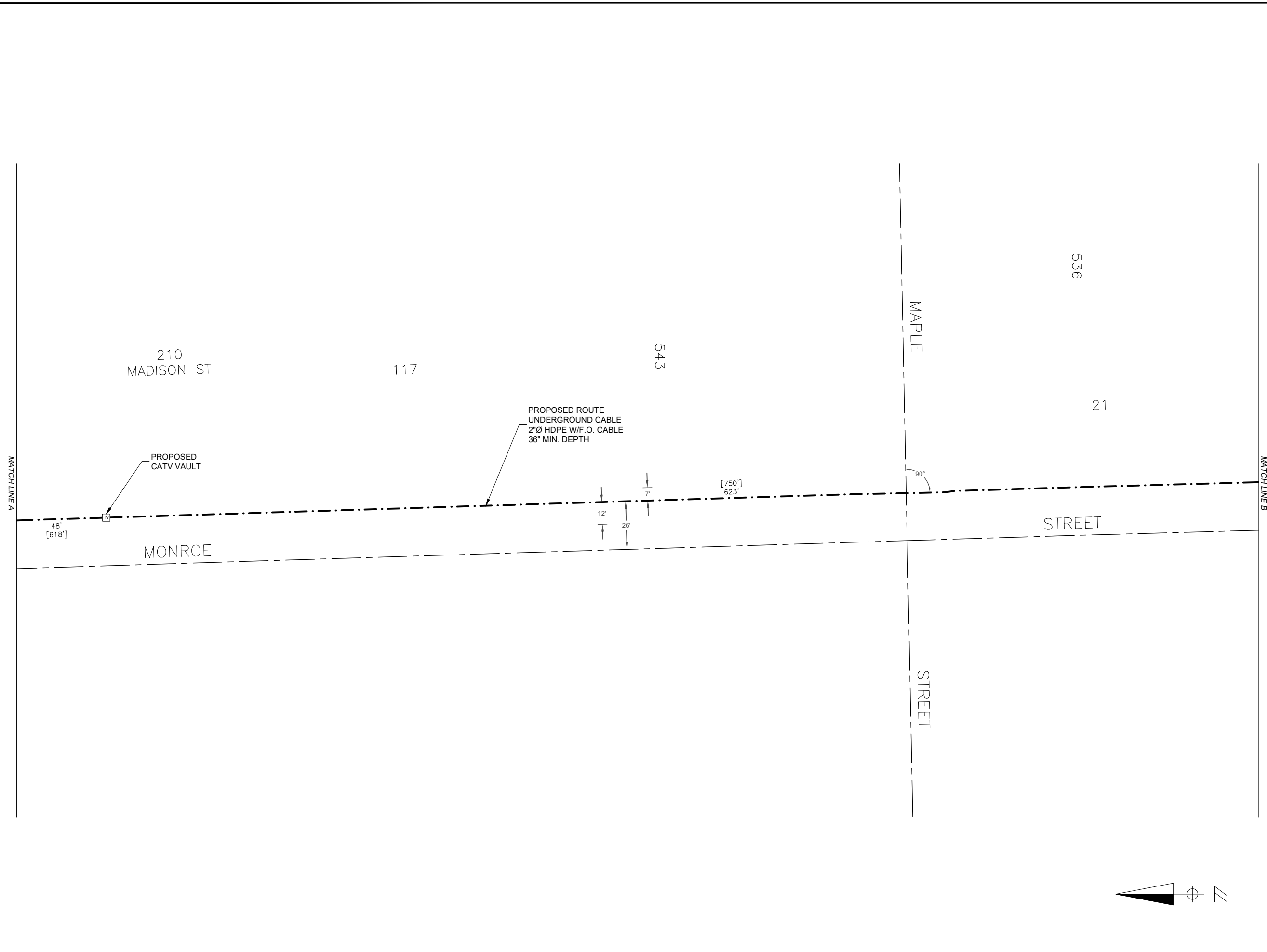
ISSUED FOR PERMITTING

SCALE: 1"=50'

REVISIONS

DATE	BY	DESCRIPTION
-	-	-
-	-	-
-	-	-





LEGEND

- SYMBOLS**
- ⊗ JOINT POLE
 - × POWER POLE
 - ⊠ TRANSFORMER POLE
 - TELEPHONE POLE
 - CATV POLE
 - CATV PED
 - CATV LOCKBOX
 - ⌈ CATV VAULT
 - ⌈ TELCO VAULT
 - ⌈ TELCO PED
 - ⌈ TRANSFORMER
 - ⌈ CATV POWER SUPPLY
 - ⌈ AIR CONDITIONER
 - ⌈ E ELECTRIC VAULT/PED/METER
 - ⌈ T TRAFFIC CONTROL VAULT
 - ⌈ U UNMARKED VAULT
 - ⌈ M CATV MANHOLE
 - ⌈ S SEWER MANHOLE (Indicate Sanitary/Storm)
 - ⌈ W WATER MANHOLE (Indicate Ownership i.e. DMC)
 - ⌈ U UNMARKED MANHOLES
 - ⌈ M MAIL BOX
 - ⌈ F FIBER MARKER
 - ⌈ G GAS MARKER (Indicate Ownership)
 - ⌈ G GAS METER
 - ⌈ R RIGHT-OF-WAY MARKER (Bench Mark)
 - ⌈ X RAILROAD CROSSING GATE
 - ⌈ S ROAD SIGN
 - ⌈ S STREET LIGHT
 - ⌈ S TRAFFIC SIGNAL LIGHT
 - ⌈ GUY AND ANCHOR
 - ⌈ F.P. FIRE HYDRANT
 - ⌈ C CATCH BASIN
 - ⌈ S SEWER DRAIN
 - ⌈ W WATER VALVE
 - ⌈ G GAS VALVE
 - ⌈ C CULVERT PIPE
 - ⌈ T TREE
 - ⌈ B BUSH
 - ⌈ H HEDGES
 - ⌈ B BORE/SPLICE PIT

- LINES**
- CENTER LINE
 - - - RIGHT-OF-WAY LINE
 - - - PROPERTY LINE
 - - - UTILITY EASEMENT
 - - - CURB LINE
 - - - OVERHEAD CABLE
 - - - UNDERGROUND CABLE
 - - - WATER MAIN
 - - - SANITARY SEWER
 - - - STORM SEWER MAIN
 - - - GAS MAIN
 - - - TELCO CABLE
 - - - BURIED ELECTRIC CABLE
 - - - FENCE



THE INFORMATION IN THIS DRAWING FILE IS PROPRIETARY AND CONFIDENTIAL AND MAY NOT BE REPRODUCED OR TRANSMITTED BY ANY MEANS OF CONVEYANCE WITHOUT WRITTEN PERMISSION FROM COMCAST.

DIRECTIONAL CONSTR. SERVICES, INC
558 E. BURNETT RD, ISLAND LAKE, IL 60042 ; (847) 875-7153

JOB NO.: DCS-760917NS
 PROJECT TITLE: COMCAST U-GROUND COMMUNICATION CABLE
NODE SEGMENTATION
 LOCATION: MONROE ST & HICKORY ST
HINSDALE, IL
 DRAWING NO. DCS-760917NS-M1
 NODE NO. N/A
 CABLE TYPE: FIBER
 SHEET NO. 3 OF 5

ESPO ENGINEERING
845 MIDWAY DR WILLIOWBROOK, IL 60527
630.789.2525
www.espocorp.com

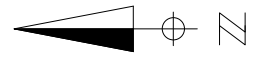
DRAWN BY: DVE DATE: 8/14/18
 APPROVED: - DATE: -

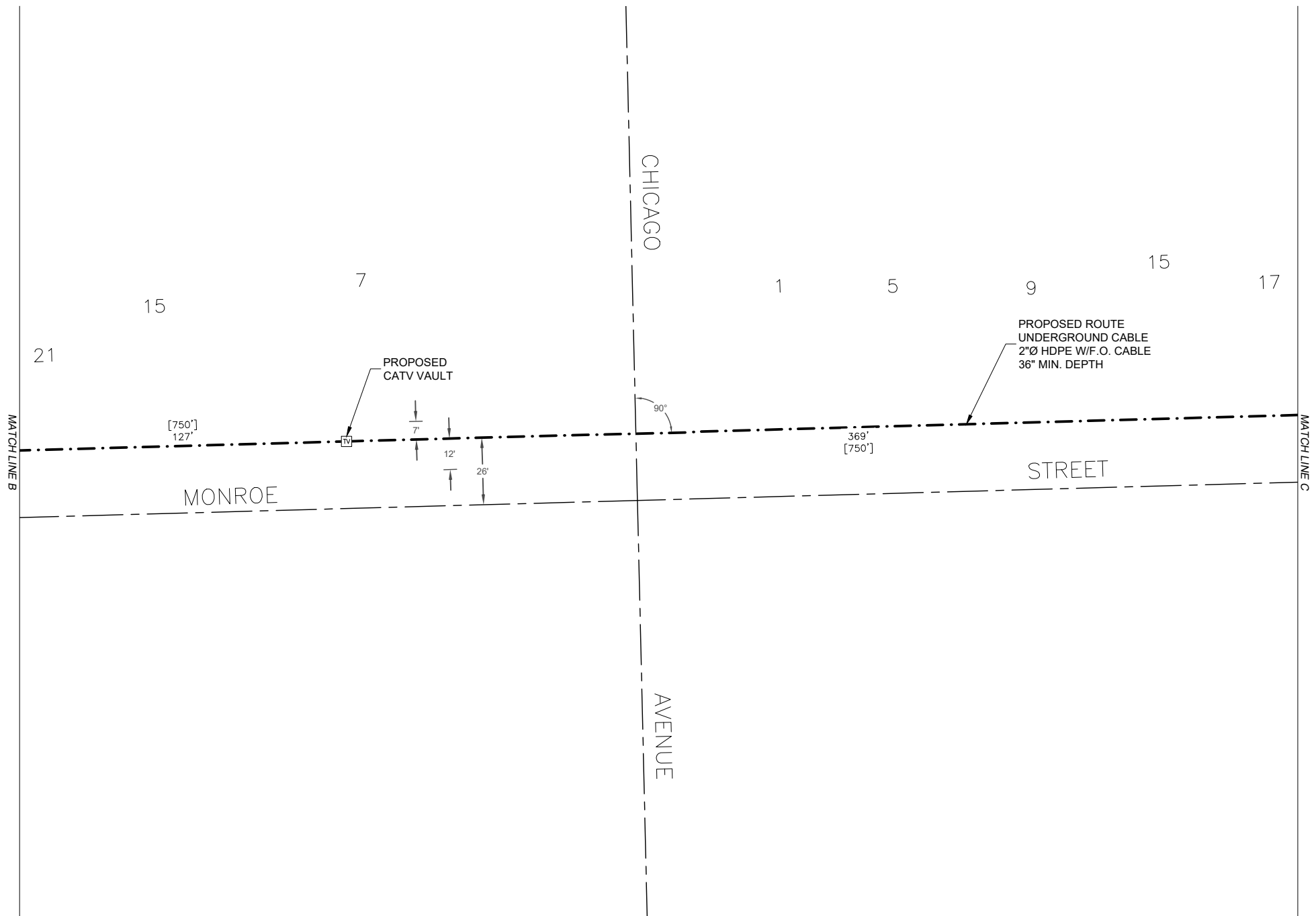
ENG NUMBER: DCS-0718-B604

ISSUED FOR PERMITTING

SCALE: 1"=50'
REVISIONS

DATE	BY	DESCRIPTION
-	-	-
-	-	-
-	-	-





LEGEND

- SYMBOLS**
- ⊗ JOINT POLE
 - × POWER POLE
 - ⊠ TRANSFORMER POLE
 - TELEPHONE POLE
 - CATV POLE
 - CATV PED
 - CATV LOCKBOX
 - TV CATV VAULT
 - P TELCO VAULT
 - △ TELCO PED
 - TR TRANSFORMER
 - ⊞ CATV POWER SUPPLY
 - ⊞ AIR CONDITIONER
 - E ELECTRIC VAULT/PED/METER
 - T TRAFFIC CONTROL VAULT
 - V UNMARKED VAULT
 - M CATV MANHOLE
 - SM SEWER MANHOLE (Indicate Sanitary/Storm)
 - WM WATER MANHOLE (Indicate Ownership i.e. DMC)
 - U UNMARKED MANHOLES
 - ⊞ MAIL BOX
 - ⊞ FIBER MARKER
 - ⊞ GAS MARKER (Indicate Ownership)
 - ⊞ GAS METER
 - ⊞ RIGHT-OF-WAY MARKER (Bench Mark)
 - ⊞ RAILROAD CROSSING GATE
 - ⊞ ROAD SIGN
 - ⊞ STREET LIGHT
 - ⊞ TRAFFIC SIGNAL LIGHT
 - ⊞ GUY AND ANCHOR
 - ⊞ FIRE HYDRANT
 - ⊞ CATCH BASIN
 - ⊞ SEWER DRAIN
 - ⊞ WATER VALVE
 - ⊞ GAS VALVE
 - ⊞ CULVERT PIPE
 - ⊞ TREE
 - ⊞ BUSH
 - ⊞ HEDGES
 - ⊞ BORE/SPLICE PIT

- LINES**
- CENTER LINE
 - - - RIGHT-OF-WAY LINE
 - - - PROPERTY LINE
 - - - UTILITY EASEMENT
 - - - CURB LINE
 - - - OVERHEAD CABLE
 - - - UNDERGROUND CABLE
 - W - WATER MAIN
 - S - SANITARY SEWER
 - G - STORM SEWER MAIN
 - G - GAS MAIN
 - TEL - TELCO CABLE
 - E - BURIED ELECTRIC CABLE
 - - - FENCE



THE INFORMATION IN THIS DRAWING FILE IS PROPRIETARY AND CONFIDENTIAL AND MAY NOT BE REPRODUCED OR TRANSMITTED BY ANY MEANS OF CONVEYANCE WITHOUT WRITTEN PERMISSION FROM COMCAST.

DIRECTIONAL CONSTR. SERVICES, INC
558 E. BURNETT RD, ISLAND LAKE, IL 60042 : (847) 875-7153

JOB NO.: DCS-760917NS
 PROJECT TITLE: COMCAST U-GROUND COMMUNICATION CABLE
NODE SEGMENTATION
 LOCATION: MONROE ST & HICKORY ST
HINSDALE, IL
 DRAWING NO. DCS-760917NS-M1
 NODE NO. N/A
 CABLE TYPE: FIBER
 SHEET NO. 4 OF 5

ESPO ENGINEERING
845 MIDWAY DR WILLIOWBROOK, IL 60527
630.789.2525
www.espcorp.com

DRAWN BY: DVE DATE: 8/14/18
 APPROVED: - DATE: -

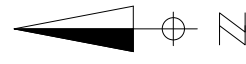
ENG NUMBER: DCS-0718-B604

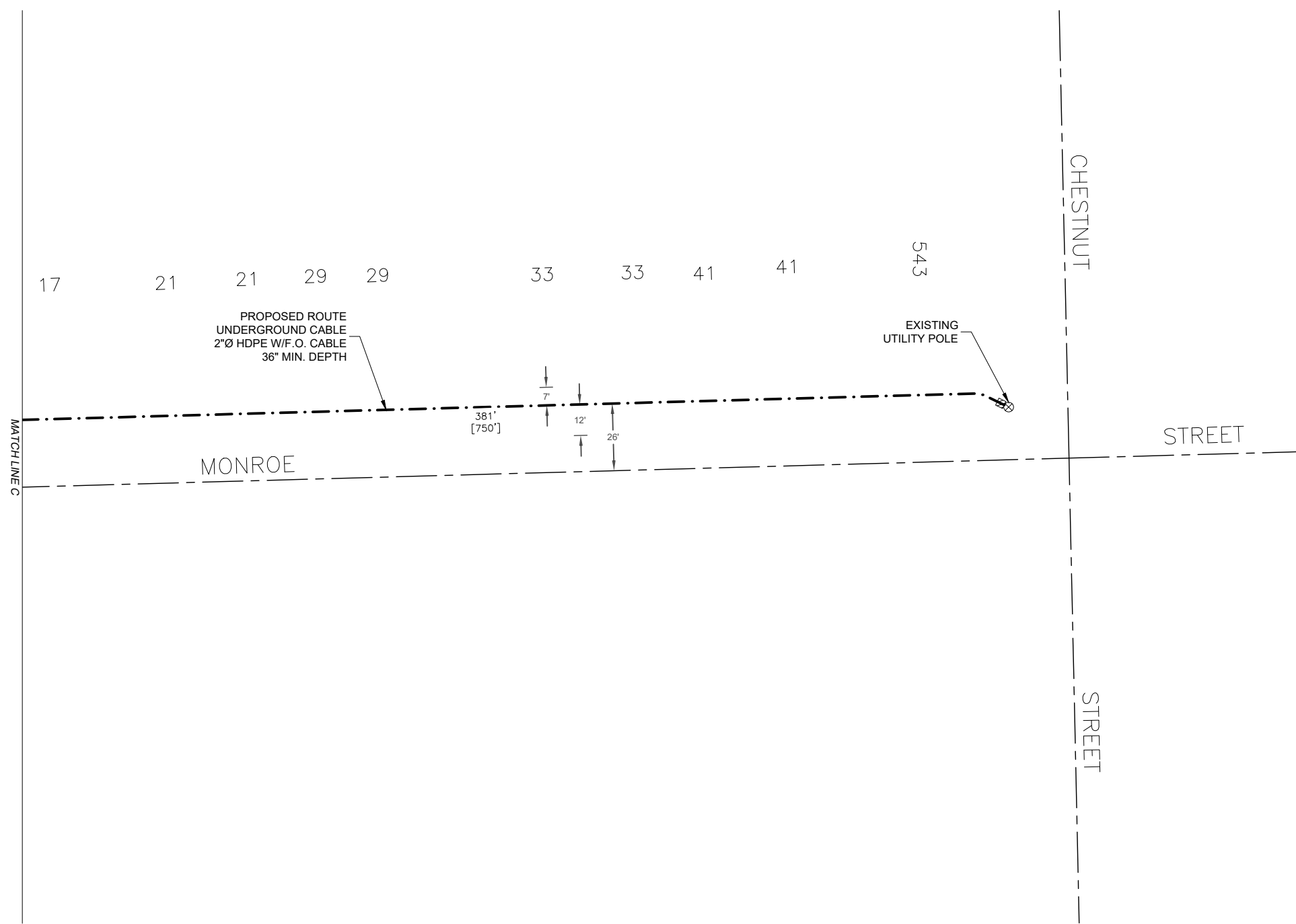
ISSUED FOR PERMITTING

SCALE: 1"=50'

REVISIONS

DATE	BY	DESCRIPTION
-	-	-
-	-	-
-	-	-





LEGEND

- SYMBOLS**
- ⊗ JOINT POLE
 - × POWER POLE
 - ⊠ TRANSFORMER POLE
 - TELEPHONE POLE
 - CATV POLE
 - CATV PED
 - CATV LOCKBOX
 - TV CATV VAULT
 - P TELCO VAULT
 - △ TELCO PED
 - TR TRANSFORMER
 - ⊞ CATV POWER SUPPLY
 - ⊞ AIR CONDITIONER
 - E ELECTRIC VAULT/PED/METER
 - T TRAFFIC CONTROL VAULT
 - V UNMARKED VAULT
 - M CATV MANHOLE
 - SM SEWER MANHOLE (Indicate Sanitary/Storm)
 - WM WATER MANHOLE (Indicate Ownership i.e. DMC)
 - U UNMARKED MANHOLES
 - M MAIL BOX
 - F FIBER MARKER
 - G GAS MARKER (Indicate Ownership)
 - M GAS METER
 - ⊙ RIGHT-OF-WAY MARKER (Bench Mark)
 - ⊗ RAILROAD CROSSING GATE
 - S ROAD SIGN
 - ⊙ STREET LIGHT
 - ⊙ TRAFFIC SIGNAL LIGHT
 - ⊙ GUY AND ANCHOR
 - F.P. FIRE HYDRANT
 - ⊙ CATCH BASIN
 - ⊙ SEWER DRAIN
 - ⊙ WATER VALVE
 - ⊙ GAS VALVE
 - ⊙ CULVERT PIPE
 - ⊙ TREE
 - ⊙ BUSH
 - ⊙ HEDGES
 - ⊙ BORE/SPLICE PIT

- LINES**
- CENTER LINE
 - - - RIGHT-OF-WAY LINE
 - - - PROPERTY LINE
 - - - UTILITY EASEMENT
 - - - CURB LINE
 - - - OVERHEAD CABLE
 - - - UNDERGROUND CABLE
 - W - WATER MAIN
 - S - SANITARY SEWER
 - G - STORM SEWER MAIN
 - G - GAS MAIN
 - TEL - TELCO CABLE
 - E - BURIED ELECTRIC CABLE
 - - - FENCE



THE INFORMATION IN THIS DRAWING FILE IS PROPRIETARY AND CONFIDENTIAL AND MAY NOT BE REPRODUCED OR TRANSMITTED BY ANY MEANS OF CONVEYANCE WITHOUT WRITTEN PERMISSION FROM COMCAST.

DIRECTIONAL CONSTR. SERVICES, INC
558 E. BURNETT RD, ISLAND LAKE, IL 60042 : (847) 875-7153

JOB NO.: DCS-760917NS
 PROJECT TITLE: COMCAST U-GROUND COMMUNICATION CABLE
NODE SEGMENTATION
 LOCATION: MONROE ST & HICKORY ST
HINSDALE, IL
 DRAWING NO. DCS-760917NS-M1
 NODE NO. N/A
 CABLE TYPE: FIBER
 SHEET NO. 5 OF 5

ESPO ENGINEERING
845 MIDWAY DR WILLIOWBROOK, IL 60527
630.789.2525
www.espocorp.com

DRAWN BY: DVE DATE: 8/14/18
 APPROVED: - DATE: -

ENG NUMBER: DCS-0718-B604

ISSUED FOR PERMITTING

SCALE: 1"=50'
 REVISIONS

DATE	BY	DESCRIPTION
-	-	-
-	-	-
-	-	-

