

**2005  
Pavement Management  
Study**

for the

**Village of Hinsdale  
Department of Public Services**

Prepared by:

MDS Technologies, Inc.  
9 S. Fairview Avenue  
Park Ridge, IL 60068

December 2005

## Introduction

The Village of Hinsdale commissioned MDS Technologies, Inc. (MDST) to conduct a pavement management study of Village maintained pavements. The primary objectives of the study were to:

- Build an computerized inventory of Village maintained pavements;
- Systematically evaluate the condition of Village maintained pavements;
- Develop Hinsdale-specific pavement deterioration models; and,
- Develop five year pavement rehabilitation programs for two potential funding scenarios.

The processes used to achieve the Village's objectives are described below. The results at key milestones in the project are also discussed.

## Road Network Definition

A database defining the Village's road network was created and populated with the data required to facilitate subsequent analysis. The road network was defined on a block by block (intersection to intersection) basis, except when a change of pavement type occurred mid-block.

Each pavement segment was uniquely defined and described by Street Name, From/To termini descriptors, Length, Width and Pavement Type. The Street Name and From/To termini descriptors were obtained from an existing hard copy database and visually confirmed through the use of street map obtained from the Village.

Pavement length and width data was acquired from the same existing hard copy database. In cases where segment length data was not available from the existing hard copy database, the length of a segment was estimated by scaling from the Village supplied street map. In cases where segment width data was not available from the existing hard copy, the width of a segment was estimated by viewing digital images of the street segment obtained by MDST as part of the field inspection component of the project.

The Pavement Type of each segment was determined by MDST as part of the field inspection component of the project. Segments with an asphaltic concrete surface were assigned a Pavement Type of 'AC'. This includes segments identified as Unimproved by the Village. Pavements with a Portland Cement concrete surface were assigned a Pavement Type of 'PCC'. Pavements with a brick paver surface were assigned a Pavement Type of 'BR'. Pavements with a gravel surface were assigned a pavement type of 'GR'. Brick and Gravel surfaced roads were included in the database but were excluded from subsequent analysis.

## **Field Data Collection**

An important component of the pavement management analysis is the inspection of each road segment. These inspections provided the data required to assess the condition of the Village's roads.

MDST used a vehicle based approach to collect geo-referenced digital images of Village maintained streets. Roof mounted cameras were used to capture sequential images of each pavement segment. A two camera system was used. One of the cameras was mounted on the front of the roof and was used to acquire forward looking, pavement oriented images capturing a general streetscape view. The second camera was mounted at the rear of the roof and was used to capture a downward looking, detailed pavement view. The images were viewed in real time by the vehicle operator to ensure that they contained the views required for subsequent condition assessment work.

Positioning data for each image was acquired through global positioning systems (GPS) technology. The positioning data allowed MDST to extract pavement condition data from the images and assign it to the corresponding pavement segment.

## **Office Based Condition Assessment**

MDST loads the geo-referenced pavement images into a software application so that a 'virtual drive' of Village streets can be performed in an office environment. MDST staff view the sequential images from both cameras to determine the severity and extent of the distresses that exist on the pavement surface. This data is then loaded into the PAVER database. The PAVER application is then used to calculate a Pavement Condition Index (PCI) score for each road segment.

## **PAVER Program**

MDST used the PAVER pavement management software application as the main tool to conduct the analyses desired by the Village. The PAVER program was originally developed by the US Army Corps of Engineers and is now administered by the American Public Works Association. PAVER is used by over 600 agencies throughout the United States and Canada as a tool to assist in the management of pavement networks.

The PCI method of pavement condition evaluation utilized by PAVER is the American Society of Testing and Materials (ASTM) standard for pavement evaluation (ASTM standard D6533-99). This the only method of pavement evaluation to recognized by ASTM.

There are, however, other methods that can be used to assess pavement condition. In some cases these methods include assessments of ride quality and/or structural

adequacy through deflection testing. MDST proposed the use of PAVER for the following reasons:

- The system is non-proprietary;
- It is well known and accepted by Public Works organizations nationwide;
- The PCI method of pavement evaluation is an ASTM standard; and,
- The system has robust analytical capability that was expected to meet the requirements of the project.

MDST staff used the PAVER program to:

- Calculate a PCI score for each road segment;
- Estimate future PCI scores based on Hinsdale specific pavement deterioration models developed from historical construction data; and,
- Develop five year pavement rehabilitation programs for two future funding scenarios.

The results of these analyses are discussed below.

## Current Condition

The condition of each road segment is reflected in its PCI score. The PCI is based on the severity and extent of surface distresses. The PAVER system considers nineteen (19) types of distress for both asphaltic and Portland cement concrete pavements. Distresses are typically either load related or climate related. Pavements that have a brick surface or a gravel surface were excluded from this analysis.

The PCI model is used to calculate a numeric score on a scale of one hundred (100) to zero (0). A score of 100 indicates that a pavement is exhibiting no distress and a score of 0 indicates that a pavement is very heavily distressed. A PCI score is calculated for each road segment. This data can then be summarized for the entire road network or a subset of the entire road network. Hinsdale's road network has been divided into two subsets - Unimproved Streets and Improved Streets.

Since the road segments vary in size, simple arithmetic averages do not accurately represent the overall road conditions. The summary data presented in the report is weighted by segment area to address this issue.

The condition of the Village's roads fall into one of five categories:

Category	PCI Range
Excellent	85 - 100
Good	70 - 84
Fair	55 - 69
Poor	30 - 54
Failed	0 - 29

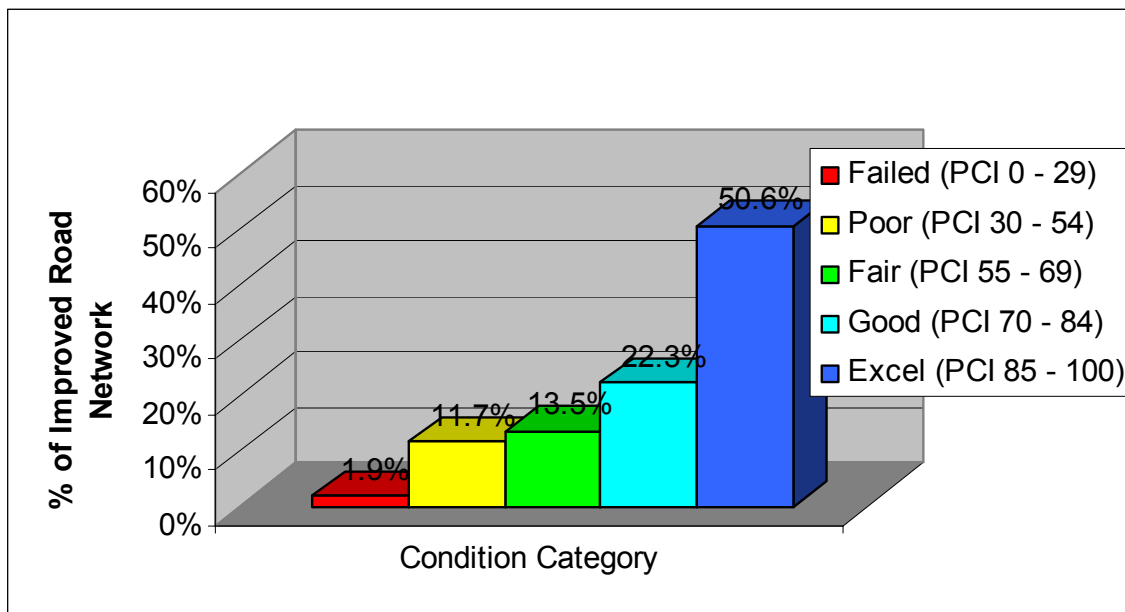
The results of the current condition analysis for the Village’s unimproved and improved roads is discussed below. It is important to note that the PCI score of each segment represents its condition at the time that the condition data was collected. MDST staff captured this data in September and October of 2005.

## ***Improved Roads***

The Village maintains approximately 63.3 miles of improved roads. This excludes roads with a brick surface. The condition of the Village’s improved roads is summarized in Figure 1. The area weighted average PCI for this group of roads is 70.0.

Very few of these roads – only 1.9 percent – are considered Failed at this time. Pavements that fall into this category are typically candidates for reconstruction: resurfacing strategies are generally not effective in this case. An additional 11.7 percent of improved roads fall into the adjacent Poor category. Many of these pavements could slide into the Failed group within the next one (1) to five (5) years if they do receive some form of rehabilitation.

When creating a multi-year pavement rehabilitation plan, the typical PAVER analysis puts priority on rehabilitating pavements in the Fair and Good categories. This is because the condition of pavements in these categories can deteriorate relatively quickly compared to pavements in the other categories. Also, if rehabilitated in a timely fashion, the cost to administer an effective rehabilitation strategy is relatively low. Approximately 22.7 miles, or 35.8 percent, of the improved road network fall into these two categories.



**Figure 1: Condition of Improved Roads**

About 32.0 miles, or 50.6 percent, of the improved roads fall into the Excellent condition category. Pavements in this category are exhibiting little to no distress.

A segment by segment listing showing the PCI score for the Village's improved roads in provided in Appendix A. This list is sorted alphabetically.

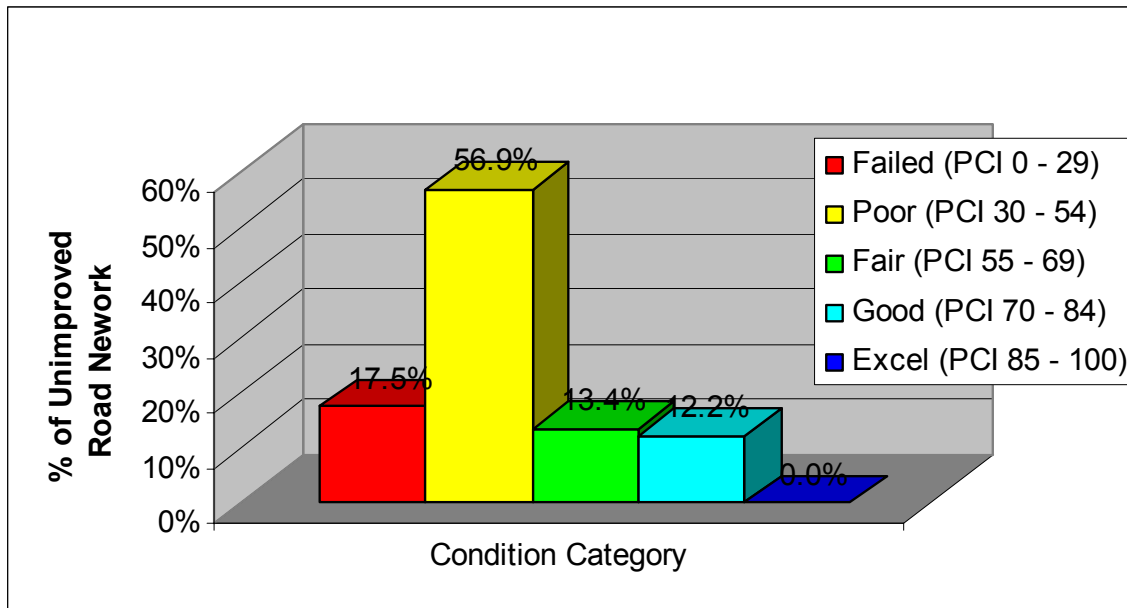
## ***Unimproved Roads***

The Village maintains approximately 4.0 miles of unimproved roads. This excludes roads with a brick surface. The condition of the Village's improved roads is summarized in Figure 2. The area weighted average PCI for this group of roads is 34.0.

About 0.7 miles, or 17.5 percent, of the Village's unimproved roads are considered Failed at this time. An additional 2.3 miles, or 56.9 percent of unimproved roads fall into the adjacent Poor category.

Approximately 1.0 miles, or 25.6 percent, of the improved road network fall into the Fair and Good categories combined. None of the Village's unimproved roads fall are considered to fall into the Excellent condition category.

A segment by segment listing showing the PCI score for the Village's unimproved roads in provided in Appendix A. This list is sorted alphabetically.



**Figure 2: Condition of Unimproved Roads**

## Future Condition

The PAVER program has the ability to estimate future PCI scores for different types of pavements. To do this, pavement deterioration models must be developed that reflect the conditions at in the Village of Hinsdale.

### ***Pavement Deterioration Models***

MDST acquired historical construction data from Village staff and used this in conjunction with the current condition data to develop performance curves that model the deterioration of PCI over time. This was done for both asphaltic and Portland cement concrete pavements.

The results of this exercise showed that the life expectancy of an asphaltic concrete pavement is about 21 years. Just after construction, a pavement should have a PCI score at or near 100. Over a 21 year period, a 'typical' asphaltic concrete pavement could be expected to deteriorate to a PCI score of 30. At this point, the pavement would be a candidate for reconstruction. Resurfacing the pavement prior to reaching this point can be expected to improve the condition of the pavement and increase its life accordingly. Similarly, the life expectancy of Portland Cement Concrete pavements is about 87 years.

Estimated unit costs to construct asphalt and PCC roads as they typically exist in Hinsdale are discussed in a subsequent section of this report. This data shows that the cost to construct a PCC pavement is about 45 percent greater than the cost to construct an AC pavement. However, the life expectancy of a PCC pavement appears to be about 4 times greater than a corresponding AC pavement. Although many factors come into play when selecting a pavement structure, it appears that PCC pavements provide the best value in terms of minimizing life cycle capital costs.

## Rehabilitation Programs

A major benefit of implementing a pavement management program like PAVER is the ability to create optimized multi-year pavement rehabilitation programs. MDST used PAVER to create five year rehabilitation plans for two budget scenarios. These budget scenarios apply to the Village's improved roads. Both scenarios were scheduled to begin in 2006 and conclude in 2010.

## **Rehabilitation Strategies**

Rehabilitation programs created through the use of PAVER must reflect the conditions and practices in place at the Village. Village staff provided a list of pavement rehabilitation strategies for the program to consider. The unit cost of each strategy was also provided. These unit costs include a fifteen percent contingency and an additional fifteen percent to account for engineering services related to construction. The rehabilitation strategies and unit costs used in the PAVER analysis are provided below. These unit prices also include an estimate for curb and gutter repair.

<b>Rehabilitation Strategy</b>	<b>Unit Cost</b>
Overlay	\$0.73/sq. ft.
Fabric + Overlay	\$1.00/sq. ft.
Mill + Overlay	\$1.13/sq. ft.
Mill + Fabric + Overlay	\$1.35/sq. ft.
Reconstruct – AC Cross-section	\$8.33/sq. ft.
Reconstruct – PCC Cross-section	\$12.09/sq. ft.

The figures for Overlay strategies reflect the fact that a two (2) inch overlay is typically used by the Village.

For reconstruction of asphaltic concrete pavements, a cross-section of six (6) inches AC over six (6) inches of granular base material over a geo-fabric was used as the basis for the unit cost. For reconstruction of Portland Cement Concrete pavements, a cross-section of seven (7) inches of PCC over four (4) inches of granular base material over a geo-fabric was used as the basis of the unit cost.

The figures supplied by the Village reflect prices recently received from construction companies. These figures were not inflated as part of estimating the cost of potential projects to be done in future years. All analysis was conducted in 2005 dollars.

## **Village Policies**

The following Village policies were built into the rehabilitation programming analysis:

- Roads with a Portland cement concrete surface are not candidates for a rehabilitation strategy that involves milling the surface; and,
- If a road is reconstructed, it is rebuilt to the same pavement type. For example, a PCC pavement before reconstruction will be a PCC pavement (not an AC pavement) after reconstruction.



It is important to note that the analysis conducted to create the rehabilitation programs considers pavement condition only. Other items such as condition of curb and gutter, condition of underground utilities, and other issues that may influence the pavements that are included in a pavement rehabilitation program are outside the scope of the current project and have not been considered.

### ***Maintain Current Condition***

The goal of this scenario is to maintain or slightly increase the current condition of the improved road network through a combination of resurfacing and reconstruction strategies. In this scenario, priority is given to pavements that fall into the Fair and Poor categories since these pavements can often be successfully rehabilitated through resurfacing which is significantly less expensive than reconstruction. In latter years of the program the focus shifts to reconstructing pavements that fall into the Failed category. After pavements have deteriorated to a certain point, reconstruction becomes the only viable alternative.

The details of this program are provided in a report in Appendix B. This report shows each road segment included in the program for each of the five plan years. The key aspects of this program are provided below. This program can be expected to increase the average PCI of the network from its current value of 70.0 to 74.9 after the 2010 Plan Year program is implemented.

<b>Plan Year</b>	<b>Estimated Cost</b>	<b>Resulting PCI</b>
2005	N/A	70.0
2006	\$991,107	72.9
2007	\$999,692	73.6
2008	\$982,562	76.4
2009	\$1,003,261	76.6
2010	\$999,017	74.9
Total	\$4,975,693	

The estimated impact that this program would have on the average condition of the improved street network is shown graphically in Figure 3.

### ***Address Reconstruction Backlog***

The goal of this scenario is to rehabilitate pavements that currently are or are expected to fall into the Failed category in the next five years. Because of the time required to perform the necessary pre-construction design work, the resurfacing oriented program from the \$1M Annual Budget Program for the 2006 Plan Year was used in the case. Plan Years 2007 through 2010 are then devoted to reconstruction projects.

In this analysis, roads are reconstructed immediately after they fall to or below a PCI score of 30. There is a backlog of pavements that fall into this category that are addressed in the first available year of the program (which is 2007). In subsequent

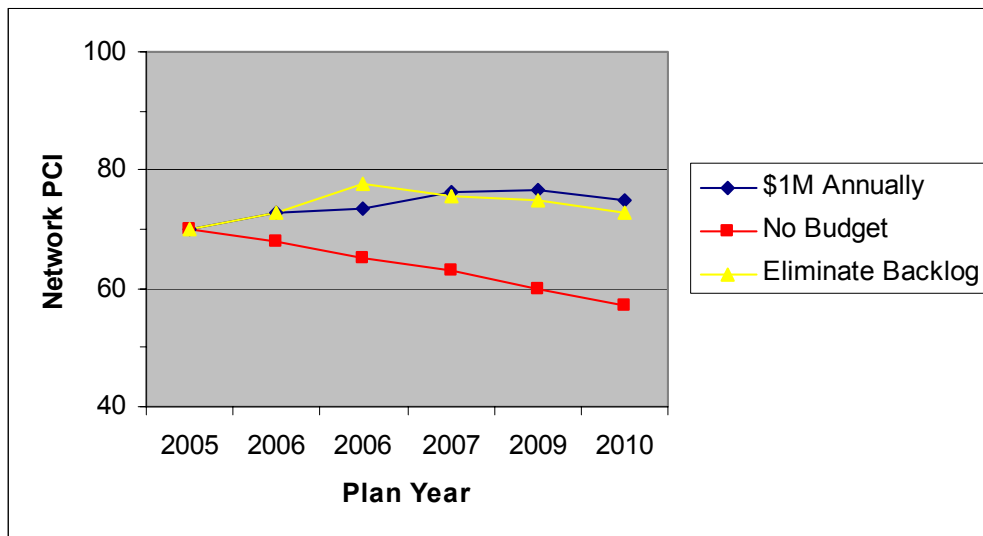
years, there is a drop off in spending since the program only addresses roads that become in need of reconstruction in that year.

The details of this program are provided in a report in Appendix B. This report shows each road segment included in the program for each of the five plan years. The key aspects of this program are provided below. This program can be expected to increase the average PCI of the network from its current value of 70.0 to 72.8 after the 2010 Plan Year program is implemented. There is a large increase in PCI after implementation of the 2007 program.

This program shows that pavements continuously degrade even if relatively large amounts of money are spent on reconstructing specific road segments.

Plan Year	Estimated Cost	Resulting PCI
2005	N/A	70.0
2006	\$991,107	72.9
2007	\$7,725,770	77.8
2008	\$627,190	75.7
2009	\$2,215,904	74.9
2010	\$979,009	72.8
Total	\$12,538,978	

The estimated impact that this program would have on the average condition of the improved street network is shown graphically in Figure 3.



**Figure 3: Estimated Impact of Various Funding Scenarios on the Condition of Hinsdale’s Improved Street Network**

## Appendix A Current Condition Reports

## Village of Hinsdale Condition of Improved Streets 2005

<u>Name</u>	<u>From</u>	<u>To</u>	<u>Length</u>	<u>Surface</u>	<u>PCI</u>
56th Street	Garfield Street	Park Avenue	400	AC	84
57th Street	Madison Street	Grant Street	1283	AC	67
57th Street	Grant Street	Washington Street	640	AC	88
57th Street	Washington Street	Garfield Street	666	AC	87
57th Street	Garfield Street	Park Avenue	410	AC	62
57th Street	Park Avenue	Childs Avenue	469	AC	78
57th Street	Childs Avenue	Elm Street	394	AC	80
57th Street	Elm Street	Oak Street	640	AC	82
57th Street	Oak Street	County Line Road	613	AC	78
58th Street	Garfield Street	Giddings Avenue	289	AC	62
58th Street	Giddings Avenue	East End	630	AC	68
59th Street	Madison Street	Old Surrey Road	512	AC	74
59th Street	Elm Street	East End	833	AC	46
59th Street	Old Surrey Road	Grant Street	754	AC	72
59th Street	Grant Street	Washington Street	668	AC	61
59th Street	Washington Street	Garfield Street	642	AC	66
Adams Street	North End	North Street	893	AC	41
Adams Street	Hinsdale Avenue	Fourth Street	597	AC	72
Adams Street	North End	Ogden Avenue	571	AC	93
Adams Street	North Street	Hickory Street	433	AC	88
Adams Street	Fourth Street	Sixth Street	656	AC	57
Adams Street	Hickory Street	Walnut Street	571	AC	87
Adams Street	Sixth Street	Seventh Street	653	AC	66
Adams Street	Walnut Street	Maple Street	515	AC	86
Adams Street	Seventh Street	Eighth Street	656	AC	63
Adams Street	Maple Street	Chicago Avenue	430	AC	86
Adams Street	Eighth Street	Ninth Street	656	AC	100
Adams Street	Chicago Avenue	Chestnut Street	656	PCC	96
Adams Street	Ninth Street	55th Street	597	AC	93
Adams Street	Chestnut Street	South End	482	PCC	88
Allmen Avenue	Ninth Street	South End	600	AC	82
Astony Court	57th Street	South End	184	AC	81
Ayres Street	Vine Street	Grant Street	390	PCC	49
Ayres Street	Grant Street	AC/PCC Change	290	PCC	30
Ayres Street	AC/PCC Change	Lincoln Street	120	AC	12
Ayres Street	Lincoln Street	Washington Street	571	AC	59
Ayres Street	Washington Street	Garfield Street	423	AC	66
Birchwood Avenue	West End	Washington Street	571	AC	88
Birchwood Avenue	Washington Street	East End	597	AC	82
Bittersweet Lane	Princeton Road	East End	361	AC	81
Blaine Street	Chicago Avenue	First Street	525	AC	99
Bobolink Drive	County Line Road	Phillippa Street	318	AC	34

## Village of Hinsdale Condition of Improved Streets 2005

<u>Name</u>	<u>From</u>	<u>To</u>	<u>Length</u>	<u>Surface</u>	<u>PCI</u>
Bobolink Drive	Phillippa Street	Justina Street	249	AC	32
Bodin Street	Chicago Avenue	Chestnut Street	610	PCC	16
Bodin Street	Hinsdale Avenue	Fourth Street	715	AC	100
Bodin Street	Fourth Street	Sixth Street	653	PCC	76
Bodin Street	Sixth Street	Seventh Street	643	PCC	92
Bodin Street	Seventh Street	Eighth Street	646	PCC	90
Bodin Street	Eighth Street	Pavement Change	322	PCC	48
Bodin Street	Pavement Change	Ninth Street	321	AC	16
Bodin Street	Ninth Street	Section Change	100	AC	18
Bonnie Brae Road	Madison Street	AC/PCC Change	400	AC	87
Bonnie Brae Road	AC/PCC Change	PCC/AC Change	60	PCC	34
Bonnie Brae Road	PCC/AC Change	The Pines	390	AC	88
Bonnie Brae Road	The Pines	Washington Street	1125	AC	91
Briargate Terrace	Madison Street	East End	620	AC	58
Bruner Street	Hinsdale Avenue	Fourth Street	522	AC	100
Bruner Street	North Street	Hickory Street	469	AC	95
Bruner Street	Fourth Street	Sixth Street	640	AC	99
Bruner Street	Hickory Street	Walnut Street	587	AC	93
Bruner Street	Sixth Street	Seventh Street	649	AC	99
Bruner Street	Walnut Street	Maple Street	531	AC	70
Bruner Street	Seventh Street	Eighth Street	649	PCC	72
Bruner Street	Maple Street	Chicago Avenue	443	AC	68
Bruner Street	Eighth Street	Ninth Street	633	AC	33
Bruner Street	Chicago Avenue	Chestnut Street	663	PCC	96
Bruner Street	Ninth Street	S End	512	AC	54
Bruner Street	Chestnut Street	Town Place	469	PCC	14
Camberley Court	West End	East End	867	AC	88
Canterbury Court	Madison Street	East End	656	AC	50
Center Street	Vine Street	Grant Street	417	PCC	43
Center Street	Grant Street	Lincoln Street	397	PCC	48
Center Street	Lincoln Street	Washington Street	515	PCC	32
Charleston Road	West End	County Line Road	2446	AC	32
Chestnut Street	West End	Stough Street	230	AC	90
Chestnut Street	Stough Street	Quincy Street	315	AC	75
Chestnut Street	Quincy Street	Bruner Street	321	PCC	45
Chestnut Street	Bruner Street	Adams Street	328	PCC	19
Chestnut Street	Adams Street	Bodin Street	335	PCC	13
Chestnut Street	Bodin Street	Monroe Street	331	PCC	32
Chestnut Street	Monroe Street	Thurlow Street	285	PCC	29
Chestnut Street	Thurlow Street	Madison Street	335	PCC	30
Chestnut Street	Madison Street	Clay Street	351	PCC	18
Chestnut Street	Clay Street	Vine Street	584	PCC	15
Chestnut Street	Vine Street	Lincoln Street	656	AC	67

## Village of Hinsdale Condition of Improved Streets 2005

<u>Name</u>	<u>From</u>	<u>To</u>	<u>Length</u>	<u>Surface</u>	<u>PCI</u>
Chicago Avenue	West End	Stough Street	261	AC	58
Chicago Avenue	Garfield Avenue	Pavement Change	90	AC	78
Chicago Avenue	Stough Street	Quincy Street	328	AC	93
Chicago Avenue	Pavement Change	Blaine Street	213	PCC	42
Chicago Avenue	Quincy Street	Bruner Street	325	AC	93
Chicago Avenue	Blaine Street	Park Avenue	346	PCC	63
Chicago Avenue	Bruner Street	Adams Street	321	AC	93
Chicago Avenue	Park Avenue	Elm Street	681	PCC	55
Chicago Avenue	Adams Street	Bodin Street	332	AC	94
Chicago Avenue	Elm Street	Orchard Place	326	PCC	62
Chicago Avenue	Bodin Street	Monroe Street	320	AC	91
Chicago Avenue	Orchard Place	Oak Street	323	PCC	52
Chicago Avenue	Monroe Street	Thurlow Street	317	AC	93
Chicago Avenue	Oak Street	Countyline Road	630	PCC	56
Chicago Avenue	Thurlow Street	Madison Street	330	AC	95
Chicago Avenue	Madison Street	Clay Street	394	AC	91
Chicago Avenue	Clay Street	Vine Street	387	AC	86
Chicago Avenue	Vine Street	Grant Street	435	AC	89
Chicago Avenue	Grant Street	Lincoln Street	400	AC	84
Chicago Avenue	Lincoln Street	Washington Street	409	AC	84
Chicago Avenue	Washington Street	Garfield Street	520	AC	90
Childs Avenue	Park Avenue	Elmwood Place	300	AC	87
Childs Avenue	Elmwood Place	57th Street	850	AC	71
Clay Street	North End	North Street	630	AC	28
Clay Street	Hickory Street	Walnut Street	515	AC	85
Clay Street	Hinsdale Avenue	Second Street	440	AC	58
Clay Street	Eighth Street	South End	367	AC	86
Clay Street	Walnut Street	Maple Street	525	AC	70
Clay Street	Second Street	Fourth Street	436	AC	58
Clay Street	Maple Street	Chicago Avenue	426	AC	91
Clay Street	Fourth Street	Sixth Street	777	PCC	68
Clay Street	Chicago Avenue	Chestnut Street	581	PCC	93
Columbia Avenue	First Street	Third Street	640	AC	52
Columbia Avenue	Woodside Avenue	Bittersweet Lane	600	AC	98
County Line Court	County Line Road	East End	302	AC	30
County Line Road	Ogden Avenue	Bobolink Drive	298	AC	80
County Line Road	Highland Road	47th Street	318	AC	95
County Line Road	Bobolink Drive	Fuller Road	902	AC	98
County Line Road	47th Street	County Line Court	161	AC	89
County Line Road	Fuller Road	Minneola Street	820	AC	85
County Line Road	County Line Court	First Street	331	AC	89
County Line Road	Minneola Street	The Lane	358	AC	90
County Line Road	First Street	Third Street	1010	AC	66

## Village of Hinsdale Condition of Improved Streets 2005

<u>Name</u>	<u>From</u>	<u>To</u>	<u>Length</u>	<u>Surface</u>	<u>PCI</u>
County Line Road	The Lane	Ravine Road	567	AC	80
County Line Road	Third Street	Fourth Street	440	AC	67
County Line Road	Ravine Road	Hickory Street	577	AC	77
County Line Road	Fourth Street	Woodside Avenue	520	AC	88
County Line Road	Hickory Street	Walnut Street	558	AC	80
County Line Road	Woodside Avenue	Sixth Street	472	AC	95
County Line Road	Walnut Street	Hill Grove Avenue	344	AC	55
County Line Road	Sixth Street	Seventh Street	564	AC	59
County Line Road	Seventh Street	Eighth Street	624	AC	71
County Line Road	Eighth Street	Woodland Avenue	250	AC	82
County Line Road	Woodland Avenue	Ninth Street	440	AC	84
County Line Road	Ninth Street	Pamela Circle	390	AC	73
County Line Road	Pamela Circle	55th Street	180	AC	77
Eighth Place	Madison Street	East End	344	AC	50
Eighth Street	Jackson Street	Stough Street	325	AC	82
Eighth Street	Stough Street	Quincy Street	298	AC	85
Eighth Street	Quincy Street	Bruner Street	328	PCC	99
Eighth Street	Bruner Street	Adams Street	328	PCC	41
Eighth Street	Adams Street	Bodin Street	328	PCC	55
Eighth Street	Bodin Street	Monroe Street	335	AC	100
Eighth Street	Monroe Street	Thurlow Street	328	AC	92
Eighth Street	Thurlow Street	Madison Street	305	AC	81
Eighth Street	Madison Street	Clay Street	617	AC	13
Eighth Street	Clay Street	Vine Street	315	AC	16
Eighth Street	Vine Street	Grant Street	318	PCC	78
Eighth Street	Grant Street	Lincoln Street	420	PCC	55
Eighth Street	Lincoln Street	Washington Street	410	PCC	28
Eighth Street	Washington Street	Garfield Street	535	PCC	13
Eighth Street	Garfield Street	Park Avenue	669	PCC	32
Eighth Street	Park Avenue	Elm Street	656	PCC	35
Eighth Street	Elm Street	Oak Street	666	PCC	42
Eighth Street	Oak Street	County Line Road	640	PCC	31
Elm Street	Ogden Avenue	Fuller Road	905	AC	85
Elm Street	Chicago Avenue	First Street	715	AC	89
Elm Street	55th Street	Elmwood Place	390	AC	78
Elm Street	Fuller Road	Minneola Street	780	AC	86
Elm Street	First Street	Third Street	558	AC	82
Elm Street	Elmwood Place	57th Street	1040	AC	72
Elm Street	Minneola Street	The Lane	330	AC	88
Elm Street	Third Street	Fourth Street	702	AC	86
Elm Street	57th Street	Meadowbrook Lane	585	AC	67
Elm Street	The Lane	Ravine Road	331	AC	86
Elm Street	Fourth Street	Sixth Street	649	AC	87

## Village of Hinsdale Condition of Improved Streets 2005

<u>Name</u>	<u>From</u>	<u>To</u>	<u>Length</u>	<u>Surface</u>	<u>PCI</u>
Elm Street	Meadowbrook Lane	59th Street	924	AC	99
Elm Street	Ravine Road	Hampton Place	656	AC	87
Elm Street	Sixth Street	Seventh Street	620	PCC	95
Elm Street	Hampton Place	Hickory Street	138	PCC	32
Elm Street	Seventh Street	Eighth Street	649	AC	83
Elm Street	Hickory Street	Walnut Street	518	AC	100
Elm Street	Eighth Street	Ninth Street	646	AC	82
Elm Street	Walnut Street	Symonds Drive	505	AC	87
Elm Street	Ninth Street	Ninth Court	374	AC	65
Elmwood Place	Childs Avenue	Elm Street	374	AC	84
Fifth Street	Grant Street	Lincoln Street	397	AC	28
Fifth Street	Lincoln Street	Washington Street	390	AC	94
Fifth Street	Washington Street	Garfield Street	561	AC	100
Fifth Street	Garfield Street	Park Avenue	787	AC	75
Fifth Street	Park Avenue	Fourth Street	253	AC	68
First Street	Grant Street	Lincoln Street	410	AC	99
First Street	Lincoln Street	Washington Street	384	AC	96
First Street	Washington Street	Garfield Street	531	AC	100
First Street	Garfield Street	Blaine Street	308	AC	32
First Street	Blaine Street	Park Avenue	328	AC	27
First Street	County Line Road	Princeton Road	656	AC	39
First Street	Princeton Road	Sharron Court	295	AC	82
First Street	Sharron Court	Springlake Avenue	321	AC	55
First Street	Springlake Avenue	Columbia Avenue	302	AC	67
Flagg Court	West End	Oak Street	167	AC	79
Forest Road	The Lane	Ravine Road	321	PCC	54
Forest Road	Ravine Road	Hickory Street	807	PCC	54
Fourth Street	Jackson Street	Stough Street	295	PCC	44
Fourth Street	Stough Street	Quincy Street	318	PCC	50
Fourth Street	Quincy Street	Bruner Street	312	PCC	25
Fourth Street	Bruner Street	Adams Street	331	PCC	22
Fourth Street	Adams Street	Bodin Street	331	PCC	15
Fourth Street	Bodin Street	Monroe Street	321	PCC	20
Fourth Street	Monroe Street	Thurlow Street	328	PCC	11
Fourth Street	Thurlow Street	Madison Street	341	PCC	12
Fourth Street	Madison Street	Clay Street	390	AC	48
Fourth Street	Clay Street	Vine Street	410	AC	56
Fourth Street	Vine Street	Grant Street	423	AC	50
Fourth Street	Grant Street	Lincoln Street	387	AC	57
Fourth Street	Lincoln Street	Washington Street	400	AC	57
Fourth Street	Washington Street	Garfield Street	544	AC	48
Fourth Street	Garfield Street	Park Avenue	741	AC	79
Fourth Street	Park Avenue	Elm Street	558	AC	40



## Village of Hinsdale Condition of Improved Streets 2005

<u>Name</u>	<u>From</u>	<u>To</u>	<u>Length</u>	<u>Surface</u>	<u>PCI</u>
Fourth Street	Elm Street	Oak Street	492	AC	56
Fourth Street	Oak Street	County Line Road	886	AC	68
Franklin Street	North End	Fuller Road	695	PCC	68
Franklin Street	Fuller Road	Minneola Street	784	PCC	78
Fuller Road	West End	York Road	676	AC	91
Fuller Road	York Road	Elm Street	630	AC	76
Fuller Road	Elm Street	Franklin Street	331	AC	85
Fuller Road	Franklin Street	Oak Street	328	AC	81
Fuller Road	Oak Street	Jefferson Street	318	AC	88
Fuller Road	Jefferson Street	County Line Road	328	AC	94
Fuller Road	County Line Road	Phillippa Street	338	AC	25
Fuller Road	Phillippa Street	Justina Street	364	AC	10
Fuller Road	Justina Street	Mills Street	318	AC	40
Garfield Avenue	North End	Maumell Street	50	AC	100
Garfield Avenue	Maumell Street	Minneola Street	417	PCC	47
Garfield Avenue	Minneola Street	The Lane	410	PCC	46
Garfield Street	The Lane	Ayres Street	267	AC	100
Garfield Street	Ayres Street	North Street	435	AC	99
Garfield Street	North Street	Hickory Street	453	AC	100
Garfield Street	Hickory Street	Walnut Street	532	AC	100
Garfield Street	Walnut Street	Maple Street	561	AC	100
Garfield Street	Maple Street	Chicago Avenue	385	AC	100
Garfield Street	Chicago Avenue	Hinsdale Avenue	215	AC	60
Garfield Street	Hinsdale Avenue	First Street	471	AC	94
Garfield Street	First Street	Third Street	648	AC	53
Garfield Street	Third Street	Fourth Street	392	AC	66
Garfield Street	Fourth Street	Fifth Street	532	AC	71
Garfield Street	Fifth Street	Sixth Street	294	AC	61
Garfield Street	Sixth Street	Ulm Place	322	AC	46
Garfield Street	Ulm Place	Seventh Street	332	AC	36
Garfield Street	Seventh Street	Eighth Street	649	AC	45
Garfield Street	Eighth Street	Ninth Street	651	AC	66
Garfield Street	Ninth Street	55th Street	652	AC	66
Garfield Street	55th Street	57th Street	1311	AC	39
Garfield Street	57th Street	58th Street	681	AC	45
Garfield Street	58th Street	59th Street	645	AC	75
Giddings Avenue	North End	58th Street	210	AC	56
Giddings Avenue	58th Street	South End	672	AC	8
Grant Street	Ogden Avenue	Center Street	410	AC	88
Grant Street	Hinsdale Avenue	First Street	115	AC	100
Grant Street	Center Street	Ayres Street	934	PCC	41
Grant Street	First Street	Second Street	282	AC	100
Grant Street	Ayres Street	North Street	423	PCC	12

## Village of Hinsdale Condition of Improved Streets 2005

<u>Name</u>	<u>From</u>	<u>To</u>	<u>Length</u>	<u>Surface</u>	<u>PCI</u>
Grant Street	Second Street	Third Street	348	AC	100
Grant Street	North Street	Hickory Street	440	AC	100
Grant Street	Third Street	Fourth Street	371	AC	38
Grant Street	Hickory Street	Walnut Street	538	AC	100
Grant Street	Fourth Street	Fifth Street	548	AC	38
Grant Street	Walnut Street	Maple Street	548	AC	100
Grant Street	Fifth Street	Sixth Street	289	PCC	86
Grant Street	Maple Street	Chicago Avenue	364	AC	100
Grant Street	Sixth Street	Seventh Street	626	PCC	82
Grant Street	Seventh Street	Eighth Street	659	AC	100
Grant Street	Eighth Street	Ninth Street	646	AC	100
Grant Street	Ninth Street	55th Street	676	AC	100
Grant Street	55th Street	57th Street	1286	AC	29
Grant Street	57th Street	59th Street	1289	AC	74
Hampton Place	Elm Street	Oak Street	922	PCC	71
Harding Road	Woodland Avenue	South End	840	AC	24
Hickory Street	Stough Street	Bruner Street	351	AC	53
Hickory Street	Bruner Street	Adams Street	646	AC	52
Hickory Street	Adams Street	Monroe Street	653	AC	39
Hickory Street	Monroe Street	Madison Street	777	AC	57
Hickory Street	Madison Street	Clay Street	440	AC	68
Hickory Street	Clay Street	Vine Street	325	AC	60
Hickory Street	Vine Street	Grant Street	426	AC	93
Hickory Street	Grant Street	Lincoln Street	423	AC	83
Hickory Street	Lincoln Street	Washington Street	417	AC	100
Hickory Street	Washington Street	Garfield Street	548	AC	98
Hickory Street	Garfield Street	Radcliffe Way	390	AC	82
Hickory Street	Radcliffe Way	Forest Road	479	AC	100
Hickory Street	Forest Road	Elm Street	430	AC	100
Hickory Street	Elm Street	Oak Street	659	AC	100
Hickory Street	Oak Street (W)	Oak Street (E)	260	PCC	100
Hickory Street	Oak Street (E)	County Line Road	390	PCC	57
Hickory Street	County Line Road	Phillippa Street	308	AC	84
Hickory Street	Phillippa Street	Justina Street	318	AC	82
Hickory Street	Justina Street	Mills Street	292	AC	79
Highland Road	County Line Road	East End	584	AC	95
Hill Grove Avenue	Oak Street	County Line Road	636	AC	12
Hillcrest Avenue	Princeton Road	Third Street	810	AC	91
Hillcrest Avenue	Third Street	Woodside Avenue	699	AC	94
Hinsdale Avenue	Jackson Street	Stough Street	243	PCC	34
Hinsdale Avenue	Stough Street	Quincy Street	328	PCC	60
Hinsdale Avenue	Quincy Street	Bruner Street	331	PCC	73
Hinsdale Avenue	Bruner Street	Adams Street	338	PCC	65

## Village of Hinsdale Condition of Improved Streets 2005

<u>Name</u>	<u>From</u>	<u>To</u>	<u>Length</u>	<u>Surface</u>	<u>PCI</u>
Hinsdale Avenue	Adams Street	Bodin Street	348	PCC	91
Hinsdale Avenue	Bodin Street	Monroe Street	325	PCC	73
Hinsdale Avenue	Monroe Street	Madison Street	348	PCC	45
Hinsdale Avenue	Madison Street	Clay Street	407	PCC	81
Hinsdale Avenue	Clay Street	Vine Street	440	PCC	75
Hinsdale Avenue	Vine Street	Grant Street	433	PCC	72
Hinsdale Avenue	Grant Street	Lincoln Street	397	AC	95
Hinsdale Avenue	Lincoln Street	Washington Street	403	AC	96
Hinsdale Avenue	Washington Street	Garfield Street	548	AC	90
Jackson Street	Hinsdale Avenue	Fourth Street	269	AC	87
Jackson Street	Fourth Street	Sixth Street	666	AC	80
Jackson Street	Sixth Street	Seventh Street	653	AC	66
Jackson Street	Seventh Street	Eighth Street	659	AC	48
Jackson Street	Eighth Street	South End	581	AC	62
Jefferson Street	North End	Fuller Road	774	AC	51
Jefferson Street	Fuller Road	Minneola Street	797	AC	40
Justina Street	Bobolink Drive	Fuller Road	768	AC	100
Justina Street	Fuller Road	Minneola Street	859	AC	100
Justina Street	Minneola Street	The Lane	515	AC	100
Justina Street	The Lane	Ravine Road	571	AC	87
Justina Street	Ravine Road	Hickory Street	571	AC	71
Justina Street	Hickory Street	Walnut Street	531	AC	82
Lansing Street	Lincoln Street	Washington Street	492	PCC	34
Lincoln Street	Ogden Avenue	Center Street	541	PCC	33
Lincoln Street	Center Street	Lansing Street	469	PCC	35
Lincoln Street	Lansing Street	AC/PCC Change	230	PCC	21
Lincoln Street	AC/PCC Change	Ayres Street	235	AC	7
Lincoln Street	Ayres Street	North Street	417	AC	34
Lincoln Street	North Street	Hickory Street	469	AC	64
Lincoln Street	Hickory Street	Walnut Street	522	AC	71
Lincoln Street	Walnut Street	Maple Street	548	AC	66
Lincoln Street	Maple Street	Chicago Avenue	403	AC	41
Lincoln Street	Chicago Avenue	Chestnut Street	217	AC	35
Lincoln Street	Chestnut Street	Hinsdale Avenue	260	AC	47
Lincoln Street	Hinsdale Avenue	First Street	236	AC	100
Lincoln Street	First Street	Second Street	325	AC	96
Lincoln Street	Second Street	Third Street	338	AC	99
Lincoln Street	Third Street	Fourth Street	407	AC	65
Lincoln Street	Fourth Street	Fifth Street	515	AC	62
Lincoln Street	Fifth Street	Sixth Street	292	AC	50
Lincoln Street	Sixth Street	Seventh Street	630	AC	38
Lincoln Street	Seventh Street	Eighth Street	653	AC	48
Lincoln Street	Eighth Street	Ninth Street	626	PCC	100

## Village of Hinsdale Condition of Improved Streets 2005

<u>Name</u>	<u>From</u>	<u>To</u>	<u>Length</u>	<u>Surface</u>	<u>PCI</u>
Madison Street	North End	Glendale Avenue	312	AC	100
Madison Street	Hinsdale Avenue	Second Street	351	AC	93
Madison Street	Glendale Avenue	Birchwood Road	357	AC	77
Madison Street	Second Street	Fourth Street	623	AC	83
Madison Street	Birchwood Road	Briargate Terrace	357	AC	74
Madison Street	Fourth Street	Sixth Street	649	AC	78
Madison Street	Briargate Terrace	Canterbury Court	357	AC	78
Madison Street	Sixth Street	Seventh Street	653	AC	84
Madison Street	Canterbury Court	Bonnie Brae Road	357	AC	68
Madison Street	Seventh Street	Eighth Street	640	AC	81
Madison Street	Bonnie Brae Road	Ogden Avenue	552	AC	66
Madison Street	Eighth Street	Ninth Street	663	AC	78
Madison Street	Ogden Avenue	Wedgewood Court	253	AC	90
Madison Street	Ninth Street	55th Street	630	AC	62
Madison Street	Wedgewood Court	Warren Court	318	AC	70
Madison Street	Warren Court	Morris Lane	443	AC	32
Madison Street	Morris Lane	North Street	436	AC	99
Madison Street	North Street	Hickory Street	443	AC	99
Madison Street	Hickory Street	Walnut Street	507	AC	96
Madison Street	Walnut Street	Maple Street	546	AC	94
Madison Street	Maple Street	Chicago Avenue	400	AC	100
Madison Street	Chicago Avenue	Chestnut Street	646	PCC	100
Maple Street	Stough Street	Quincy Street	295	AC	78
Maple Street	Quincy Street	Bruner Street	325	AC	93
Maple Street	Bruner Street	Adams Street	335	AC	90
Maple Street	Adams Street	Monroe Street	646	AC	89
Maple Street	Monroe Street	Madison Street	649	AC	89
Maple Street	Madison Street	Clay Street	325	AC	89
Maple Street	Clay Street	Vine Street	466	AC	94
Maple Street	Vine Street	Grant Street	407	AC	91
Maple Street	Grant Street	Lincoln Street	417	AC	84
Maple Street	Lincoln Street	Washington Street	410	AC	80
Maple Street	Washington Street	Garfield Street	535	AC	92
Maple Street	Garfield Street	Park Avenue	646	AC	27
Maumell Street	Garfield Avenue	York Road	512	PCC	49
Meadowbrook Lane	West End	Elm Street	735	AC	97
Merrill Woods	Birchwood Avenue	South End	403	AC	99
Mills Street	North End	Fuller Road	197	AC	44
Mills Street	Hickory Street	Walnut Street	512	PCC	76
Mills Street	North End	The Lane	699	AC	3
Mills Street	Fuller Road	South End	689	AC	51
Mills Street	The Lane	Ravine Road	535	AC	88
Minneola Street	Washington Street	Garfield Avenue	394	AC	86

## Village of Hinsdale Condition of Improved Streets 2005

<u>Name</u>	<u>From</u>	<u>To</u>	<u>Length</u>	<u>Surface</u>	<u>PCI</u>
Minneola Street	Elm Street	Franklin Street	270	PCC	81
Minneola Street	Garfield Avenue	York Road	387	AC	82
Minneola Street	Franklin Street	Oak Street	270	PCC	93
Minneola Street	Oak Street	Jefferson Street	280	PCC	77
Minneola Street	Jefferson Street	County Line Road	280	PCC	87
Minneola Street	County Line Road	Phillippa Street	325	AC	92
Minneola Street	Phillippa Street	Justina Street	338	AC	87
Minneola Street	Justina Street	Mills Street	360	AC	12
Monroe Street	Ogden Avenue	North Street	1216	AC	100
Monroe Street	Second Street	Fourth Street	613	AC	98
Monroe Street	North Street	Hickory Street	469	AC	58
Monroe Street	Fourth Street	Sixth Street	643	PCC	23
Monroe Street	Hickory Street	Walnut Street	487	AC	50
Monroe Street	Sixth Street	Seventh Street	643	AC	94
Monroe Street	Walnut Street	Maple Street	477	AC	90
Monroe Street	Seventh Street	Eighth Street	653	AC	58
Monroe Street	Maple Street	Chicago Avenue	410	AC	99
Monroe Street	Eighth Street	Ninth Street	646	AC	42
Monroe Street	Chicago Avenue	Chestnut Street	633	AC	94
Monroe Street	Chestnut Street	Hinsdale Avenue	413	AC	92
Morris Lane	West End	Madison Street	282	AC	96
Ninth Court	Park Avenue	Elm Street	640	AC	96
Ninth Street	Bruner Street	Adams Street	312	AC	100
Ninth Street	Washington Street	Garfield Street	551	AC	69
Ninth Street	Elm Street	Oak Street	643	AC	83
Ninth Street	Adams Street	Bodin Street	325	AC	92
Ninth Street	Garfield Street	Park Avenue	630	AC	52
Ninth Street	Oak Street	County Line Road	610	AC	87
Ninth Street	Bodin Street	East End	151	AC	94
Ninth Street	Madison Street	Allmen Avenue	325	AC	86
Ninth Street	Allmen Avenue	Vine Street	280	AC	45
Ninth Street	Vine Street	Grant Street	520	AC	76
Ninth Street	Grant Street	Lincoln Street	367	PCC	59
North Street	West End	Quincy Street	151	AC	62
North Street	Quincy Street	Bruner Street	341	AC	81
North Street	Bruner Street	Bruner Place	260	AC	78
North Street	Bruner Place	Adams Street	375	AC	81
North Street	Adams Street	Monroe Street	656	AC	80
North Street	Monroe Street	Madison Street	640	AC	78
North Street	Madison Street	Clay Street	390	AC	88
North Street	Clay Street	Vine Street	390	AC	89
North Street	Vine Street	Grant Street	430	AC	100
North Street	Grant Street	Lincoln Street	374	AC	100

## Village of Hinsdale Condition of Improved Streets 2005

<u>Name</u>	<u>From</u>	<u>To</u>	<u>Length</u>	<u>Surface</u>	<u>PCI</u>
North Street	Lincoln Street	Washington Street	413	AC	100
North Street	Washington Street	Garfield Street	528	AC	100
Oak Street	Ogden Avenue	Fuller Road	1017	AC	71
Oak Street	55th Street	57th Street	1459	AC	81
Oak Street	Fuller Road	Minneola Street	846	AC	89
Oak Street	Minneola Street	The Lane	341	AC	87
Oak Street	The Lane	Ravine Road	302	AC	89
Oak Street	Ravine Road	Hampton Place	407	AC	95
Oak Street	Hampton Place	Hickory Street	492	AC	94
Oak Street	Hickory Street	Flagg Court	262	AC	76
Oak Street	Flagg Court	Walnut Street	259	AC	80
Oak Street	Walnut Street	Hill Grove Avenue	518	AC	94
Oak Street	End Bridge	Chicago Avenue	213	AC	70
Oak Street	Chicago Avenue	First Street	722	AC	79
Oak Street	First Street	Third Street	544	AC	80
Oak Street	Third Street	Fourth Street	538	AC	58
Oak Street	Fourth Street	Woodside Avenue	325	AC	58
Oak Street	Woodside Avenue	Sixth Street	390	AC	54
Oak Street	Sixth Street	Seventh Street	623	PCC	93
Oak Street	Seventh Street	Eighth Street	656	PCC	30
Oak Street	Eighth Street	Ninth Street	643	AC	35
Oak Street	Ninth Street	South End	462	AC	87
Oakwood Terrace	Birchwood Avenue	South End	512	AC	26
Orchard Place	Chicago Avenue	First Street	686	AC	90
Pamela Circle	West End	County Line Road	492	AC	38
Pamela Circle	County Line Road	East End	544	AC	36
Park Avenue	Hickory Street	Walnut Street	512	AC	78
Park Avenue	Chicago Avenue	First Street	626	AC	45
Park Avenue	Park Circle	56th Street	585	AC	74
Park Avenue	First Street	Third Street	712	AC	75
Park Avenue	56th Street	57th Street	620	AC	87
Park Avenue	Third Street	Fourth Street	472	AC	67
Park Avenue	Fourth Street	Fifth Street	384	AC	90
Park Avenue	Fifth Street	Sixth Street	367	AC	81
Park Avenue	Sixth Street	Seventh Street	656	AC	81
Park Avenue	Seventh Street	Eighth Street	656	AC	89
Park Avenue	Eighth Street	Ninth Street	656	PCC	55
Park Avenue	Ninth Street	Ninth Court	390	AC	57
Park Circle	North End	Childs Avenue	203	AC	91
Phillippa Street	Bobolink Drive	Fuller Road	918	AC	100
Phillippa Street	Fuller Road	Minneola Street	833	AC	100
Phillippa Street	Minneola Street	The Lane	403	AC	100
Phillippa Street	The Lane	Ravine Road	561	AC	86

## Village of Hinsdale Condition of Improved Streets 2005

<u>Name</u>	<u>From</u>	<u>To</u>	<u>Length</u>	<u>Surface</u>	<u>PCI</u>
Phillippa Street	Ravine Road	Hickory Street	590	AC	74
Phillippa Street	Hickory Street	Walnut Street	636	AC	86
Princeton Road	N End	First Street	705	AC	42
Princeton Road	First Street	Third Street	653	AC	58
Princeton Road	Third Street	Woodside Avenue	738	AC	9
Quincy Street	North End	North Street	669	AC	98
Quincy Street	Hinsdale Avenue	Fourth Street	436	PCC	99
Quincy Street	North Street	Hickory Street	456	AC	32
Quincy Street	Fourth Street	Sixth Street	659	PCC	95
Quincy Street	Hickory Street	Stough Street	455	AC	76
Quincy Street	Sixth Street	Seventh Street	659	PCC	96
Quincy Street	Stough Street	Maple Street	585	AC	100
Quincy Street	Seventh Street	Eighth Street	649	PCC	95
Quincy Street	Maple Street	Chicago Avenue	420	AC	89
Quincy Street	Eighth Street	South End	423	AC	91
Quincy Street	Chicago Avenue	Chestnut Street	663	PCC	56
Quincy Street	Chestnut Street	Town Place	469	PCC	53
Radcliffe Way	Ravine Road	Hickory Street	682	PCC	37
Railroad Avenue	West End	AC/PCC Change	150	AC	28
Railroad Avenue	AC/PCC Change	Stough Street	200	PCC	19
Ravine Road	Garfield Street	Radcliffe Way	430	PCC	46
Ravine Road	Radcliffe Way	Forest Road	456	PCC	52
Ravine Road	Forest Road	Elm Street	436	PCC	58
Ravine Road	Elm Street	Oak Street (W)	774	PCC	58
Ravine Road	Oak Street (W)	Oak Street (E)	250	AC	20
Ravine Road	Oak Street (E)	County Line Road	390	PCC	44
Ravine Road	County Line Road	Phillippa Street	308	AC	83
Ravine Road	Phillippa Street	Justina Street	331	AC	91
Ravine Road	Justina Street	Mills Street	318	AC	88
Second Street	Monroe Street	Thurlow Street	325	AC	41
Second Street	Thurlow Street	Madison Street	260	AC	34
Second Street	Madison Street	Clay Street	397	AC	56
Second Street	Clay Street	Vine Street	341	AC	81
Second Street	Vine Street	Grant Street	351	AC	34
Second Street	Grant Street	Lincoln Street	403	AC	100
Second Street	Lincoln Street	Washington Street	377	AC	100
Seventh Street	Jackson Street	Stough Street	321	PCC	59
Seventh Street	Vine Street	Grant Street	423	PCC	97
Seventh Street	Taft Road	Wilson Lane	499	AC	47
Seventh Street	Stough Street	Quincy Street	312	PCC	47
Seventh Street	Grant Street	Lincoln Street	239	PCC	31
Seventh Street	Quincy Street	Bruner Street	315	PCC	66
Seventh Street	Lincoln Street	Washington Street	394	AC	65

## Village of Hinsdale Condition of Improved Streets 2005

<u>Name</u>	<u>From</u>	<u>To</u>	<u>Length</u>	<u>Surface</u>	<u>PCI</u>
Seventh Street	Bruner Street	Adams Street	325	PCC	68
Seventh Street	Washington Street	Garfield Street	554	AC	59
Seventh Street	Adams Street	Bodin Street	308	PCC	88
Seventh Street	Garfield Street	Park Avenue	646	PCC	94
Seventh Street	Bodin Street	Monroe Street	312	AC	71
Seventh Street	Park Avenue	Elm Street	656	PCC	89
Seventh Street	Monroe Street	Thurlow Street	331	AC	65
Seventh Street	Elm Street	Oak Street	643	PCC	89
Seventh Street	Thurlow Street	Madison Street	292	AC	54
Seventh Street	Oak Street	County Line Road	620	PCC	42
Sharron Court	North End	First Street	394	AC	68
Sixth Street	Jackson Street	Stough Street	308	AC	65
Sixth Street	Stough Street	Quincy Street	331	AC	72
Sixth Street	Quincy Street	Bruner Street	321	AC	73
Sixth Street	Bruner Street	Adams Street	318	AC	87
Sixth Street	Adams Street	Bodin Street	325	AC	87
Sixth Street	Bodin Street	Monroe Street	328	AC	85
Sixth Street	Monroe Street	Thurlow Street	335	AC	87
Sixth Street	Thurlow Street	Madison Street	315	AC	87
Sixth Street	Madison Street	Clay Street	390	PCC	100
Sixth Street	Clay Street	Vine Street	390	PCC	35
Sixth Street	Vine Street	Grant Street	423	PCC	56
Sixth Street	Grant Street	Lincoln Street	387	AC	47
Sixth Street	Lincoln Street	Washington Street	394	AC	64
Sixth Street	Washington Street	Garfield Street	538	AC	14
Springlake Avenue	North End	First Street	525	AC	97
Springlake Avenue	First Street	Third Street	649	AC	100
Springlake Avenue	Third Street	Woodside Avenue	686	AC	100
Stough Street	Quincy Street	Maple Street	620	AC	34
Stough Street	Maple Street	South End	361	AC	66
Stough Street	Chicago Avenue	Chestnut Street	594	AC	43
Stough Street	Chestnut Street	Town Place	508	AC	38
Stough Street	Town Place	Railroad Avenue	286	AC	62
Stough Street	Railroad Avenue	Hinsdale Avenue	65	PCC	21
Stough Street	Hinsdale Avenue	Fourth Street	348	AC	98
Stough Street	Fourth Street	Sixth Street	663	AC	97
Stough Street	Sixth Street	Seventh Street	643	AC	100
Stough Street	Seventh Street	Eighth Street	669	AC	98
Stough Street	Eighth Street	Ninth Street	646	AC	49
Stough Street	Ninth Street	South End	626	AC	68
Symonds Drive	Garfield Street	Park Avenue	653	AC	86
Symonds Drive	Park Avenue	Elm Street	718	AC	90
The Lane	Garfield Avenue	York Road	210	AC	100



## Village of Hinsdale Condition of Improved Streets 2005

<u>Name</u>	<u>From</u>	<u>To</u>	<u>Length</u>	<u>Surface</u>	<u>PCI</u>
The Lane	York Road	Walker Road	410	AC	84
The Lane	Walker Road	Forest Road	230	AC	85
The Lane	Forest Road	Elm Street	390	AC	82
The Lane	Elm Street	Oak Street	607	AC	45
The Lane	Oak Street	County Line Road	666	PCC	38
The Lane	County Line Road	Phillippa Street	318	AC	83
The Lane	Phillippa Street	Justina Street	308	AC	85
The Lane	Justina Street	Mills Street	289	AC	75
The Pines	North End	Bonnie Brae Road	553	AC	62
Third Street	Vine Street	Grant Street	423	AC	100
Third Street	Grant Street	Lincoln Street	403	AC	100
Third Street	Lincoln Street	Washington Street	403	AC	100
Third Street	Washington Street	Garfield Street	544	AC	95
Third Street	Garfield Street	Park Avenue	643	AC	68
Third Street	Park Avenue	Elm Street	702	AC	66
Third Street	Elm Street	Oak Street	298	AC	66
Third Street	Oak Street	Oak Street	364	AC	70
Third Street	Oak Street	County Line Road	286	AC	25
Third Street	County Line Road	Hillcrest Avenue	574	AC	93
Third Street	Hillcrest Avenue	Princeton Road	440	PCC	65
Third Street	Princeton Road	Springlake Avenue	551	AC	69
Third Street	Springlake Avenue	Columbia Avenue	436	AC	54
Thurlow Street	Chicago Avenue	Chestnut Street	617	PCC	32
Thurlow Street	Second Street	Fourth Street	594	AC	71
Thurlow Street	Fourth Street	Sixth Street	649	PCC	100
Thurlow Street	Sixth Street	Seventh Street	656	AC	99
Thurlow Street	Seventh Street	Eighth Street	656	AC	91
Thurlow Street	Eighth Street	Ninth Street	646	AC	64
Thurlow Street	Ninth Street	South End	417	AC	97
Town Place	Stough Street	Bruner Street	620	AC	73
Ulm Place	Washington Street	Garfield Street	522	PCC	11
Vine Street	Ogden Avenue	Center Street	260	AC	34
Vine Street	Hinsdale Avenue	Second Street	495	AC	34
Vine Street	Seventh Street	Eighth Street	617	PCC	97
Vine Street	Ninth Street	South End	574	AC	86
Vine Street	Center Street	AC/PCC Change	722	AC	52
Vine Street	Second Street	Third Street	280	AC	28
Vine Street	Eighth Street	South End	430	AC	78
Vine Street	AC/PCC Change	Ayres Street	200	PCC	31
Vine Street	Ayres Street	AC/PCC Change	160	PCC	29
Vine Street	Third Street	Fourth Street	390	AC	22
Vine Street	AC/PCC Change	North Street	300	AC	90
Vine Street	North Street	Hickory Street	446	AC	80

## Village of Hinsdale Condition of Improved Streets 2005

<u>Name</u>	<u>From</u>	<u>To</u>	<u>Length</u>	<u>Surface</u>	<u>PCI</u>
Vine Street	Fourth Street	Sixth Street	784	PCC	23
Vine Street	Hickory Street	Walnut Street	525	AC	93
Vine Street	Walnut Street	Maple Street	574	AC	89
Vine Street	Maple Street	Chicago Avenue	377	AC	94
Walker Road	York Road	The Lane	321	PCC	3
Walnut Street	Bruner Street	Adams Street	426	AC	61
Walnut Street	Madison Street	Clay Street	456	PCC	37
Walnut Street	Adams Street	Monroe Street	640	AC	33
Walnut Street	Clay Street	Vine Street	344	PCC	32
Walnut Street	Vine Street	Grant Street	413	AC	3
Walnut Street	Grant Street	Lincoln Street	387	AC	52
Walnut Street	Lincoln Street	Washington Street	400	AC	32
Walnut Street	Washington Street	Garfield Street	548	AC	19
Walnut Street	Garfield Street	Park Avenue	649	AC	54
Walnut Street	Park Avenue	Elm Street	656	AC	36
Walnut Street	Elm Street	Oak Street	659	AC	72
Walnut Street	Oak Street	County Line Road	633	AC	71
Walnut Street	County Line Road	Phillippa Street	318	AC	76
Walnut Street	Phillippa Street	Justina Street	295	AC	77
Walnut Street	Justina Street	Mills Street	328	AC	84
Warren Court	West End	Madison Street	177	AC	38
Warren Terrace	Madison Street	North End	915	AC	45
Washington Circle	Lincoln Street	Washington Street	492	AC	100
Washington Street	N End	57th Street	1230	AC	86
Washington Street	N End	59th Street	611	AC	74
Washington Street	Birchwood Avenue	Ogden Avenue	892	AC	93
Washington Street	Ogden Avenue	Minneola	910	PCC	30
Washington Street	Minneola Street	Lansing Street	230	PCC	36
Washington Street	Lansing Street	AC/PCC Change	120	PCC	12
Washington Street	AC/PCC Change	Ayres	259	AC	61
Washington Street	Ayres Street	North Street	440	AC	27
Washington Street	North Street	Hickory Street	446	AC	37
Washington Street	Hickory Street	Walnut Street	541	AC	48
Washington Street	Walnut Street	Maple Street	567	AC	83
Washington Street	Maple Street	Chicago Avenue	397	AC	77
Washington Street	Chicago Avenue	Hinsdale Avenue	328	AC	100
Washington Street	Hinsdale Avenue	First Street	328	AC	100
Washington Street	First Street	Second Street	310	AC	100
Washington Street	Second Street	Third Street	325	AC	100
Washington Street	Third Street	Fourth Street	394	AC	53
Washington Street	Fourth Street	Fifth Street	548	AC	78
Washington Street	Fifth Street	Sixth Street	289	AC	88
Washington Street	Sixth Street	Ulm Place	315	AC	78

## Village of Hinsdale Condition of Improved Streets 2005

<u>Name</u>	<u>From</u>	<u>To</u>	<u>Length</u>	<u>Surface</u>	<u>PCI</u>
Washington Street	Ulm Place	Seventh Street	341	AC	90
Washington Street	Seventh Street	Eighth Street	643	AC	84
Washington Street	Eighth Street	Ninth Street	656	PCC	100
Wedgewood Court	West End	Madison Street	180	AC	59
Woodmere Drive	West End	Garfield Street	686	AC	77
Woodside Avenue	Princeton Road	Springlake Avenue	171	AC	55
Woodside Avenue	Springlake Avenue	Columbia Avenue	672	AC	14
York Road	Ogden Avenue	Fuller Road	543	AC	65
York Road	Fuller Road	Maumell Street	419	AC	81
York Road	Maumell Street	Minneola Street	366	AC	86
York Road	Minneola Street	The Lane	423	AC	82

**Ave PCI 69.4**  
**Ave PCI (weighted by area) 70.0**

## Village of Hinsdale

### Condition of Unimproved Roads

### Fall 2005

<u>Street Name</u>	<u>From</u>	<u>To</u>	<u>Length</u>	<u>Surface</u>	<u>PCI</u>
Bittersweet Lane	West End	Princeton Road	433	AC	48
Bodin Street	Section Change	S End	390	AC	22
Bruner Place	North End	North Street	708	AC	2
Bruner Street	North End	North Street	676	AC	43
Cleveland Road	Seventh Street	Woodland Avenue	823	AC	47
Cleveland Road	Woodland Avenue	South End	1332	AC	38
Dalewood Lane	Sixth Street	East End	495	AC	28
Harding Road	Seventh Street	Woodland Avenue	925	AC	32
McKinley Lane	Seventh Street	Woodland Avenue	906	AC	59
Monroe Street	Ninth Street	55th Street	633	AC	43
Ninth Street	Monroe Street	Thurlow Street	289	AC	18
Ninth Street	Thurlow Street	Madison Street	328	AC	6
Princeton Road	Woodside Avenue	Sixth Street	260	AC	40
Princeton Road	Sixth Street	Bittersweet Lane	433	AC	38
Princeton Road	Bittersweet Lane	Seventh Street	670	AC	30
Quincy Street	North End	55th Street	567	AC	15
Seventh Street	Wilson Lane	Harding Road	423	AC	40
Seventh Street	County Line Road	Cleveland Road	430	AC	15
Seventh Street	Cleveland Road	McKinley Lane	417	AC	33
Sixth Street	County Line Road	Dalewood Lane	426	AC	34
Sixth Street	Dalewood Lane	Princeton Road	899	AC	35
Taft Road	Seventh Street	Woodland Avenue	1040	AC	33
Taft Road	Woodland Avenue	55th Street	650	AC	19
Washington Street	Glendale Avenue	Birchwood Avenue	413	AC	79
West Bonnie Brae	West End	Madison Street	633	AC	77
Wilson Lane	Seventh Street	Woodland Avenue	1154	AC	36
Woodland Avenue	County Line Road	Cleveland Road	1034	AC	14
Woodland Avenue	Cleveland Road	McKinley Lane	390	AC	20
Woodland Avenue	McKinley Lane	Taft Road	390	AC	13
Woodland Avenue	Taft Road	Wilson Lane	455	AC	16
Woodland Avenue	Wilson Lane	Harding Road	325	AC	30
Woodside Avenue	Oak Street	County Line Road	899	AC	25
Woodside Avenue	County Line Road	Hillcrest Avenue	725	AC	20
Woodside Avenue	Hillcrest Avenue	Princeton Road	613	AC	65

**Ave PCI 32.7**  
**Ave PCI (weighted by area) 34.0**

Appendix B  
Five Year Rehabilitation Program  
\$1M Annual Budget

## Village of Hinsdale Five Year Pavement Rehabilitation Plan \$1M Annual Budget

<u>Street Name</u>	<u>From</u>	<u>To</u>	<u>Surf. Type</u>	<u>PCI Prior</u>	<u>Estimated Cost</u>	<u>Rehabilitation Strategy</u>
<b>Plan Year: 2006</b>						
Monroe Street	North Street	Hickory Street	AC	57	\$16,462	Mill + Fabric + O/L
Monroe Street	Hickory Street	Walnut Street	AC	49	\$17,094	Mill + Fabric + O/L
Madison Street	Warren Court	Morris Lane	AC	31	\$15,549	Mill + Fabric + O/L
Stough Street	Chestnut Street	Town Place	AC	37	\$17,831	Mill + Fabric + O/L
Stough Street	Town Place	Railroad Avenue	AC	61	\$8,403	Mill + Fabric + O/L
Vine Street	Second Street	Third Street	AC	27	\$60,642	Reconstruct: AC
Grant Street	Fourth Street	Fifth Street	AC	37	\$19,235	Mill + Fabric + O/L
Grant Street	Fifth Street	Sixth Street	PCC	86	\$5,485	Overlay
Grant Street	55th Street	57th Street	AC	28	\$62,500	Mill + Fabric + O/L
Lincoln Street	Ogden Avenue	Center Street	PCC	33	\$10,268	Overlay
Lincoln Street	Center Street	Lansing Street	PCC	35	\$8,902	Overlay
Lincoln Street	North Street	Hickory Street	AC	63	\$13,779	Mill + O/L
Lincoln Street	Chicago Avenue	Chestnut Street	AC	34	\$7,617	Mill + Fabric + O/L
Garfield Street	Chicago Avenue	Hinsdale Avenue	AC	59	\$8,708	Mill + Fabric + O/L
Garfield Street	First Street	Third Street	AC	52	\$26,244	Mill + Fabric + O/L
Garfield Street	Third Street	Fourth Street	AC	65	\$13,289	Mill + O/L
Garfield Street	Fourth Street	Fifth Street	AC	70	\$15,960	Fabric + O/L
Garfield Street	Fifth Street	Sixth Street	AC	60	\$9,967	Mill + O/L
Garfield Street	Sixth Street	Ulm Place	AC	45	\$13,041	Mill + Fabric + O/L
Garfield Street	Ulm Place	Seventh Street	AC	35	\$13,446	Mill + Fabric + O/L
Garfield Street	Seventh Street	Eighth Street	AC	44	\$26,285	Mill + Fabric + O/L
Garfield Street	Eighth Street	Ninth Street	AC	65	\$22,069	Mill + O/L
Garfield Street	Ninth Street	55th Street	AC	65	\$22,103	Mill + O/L
Elm Street	Hampton Place	Hickory Street	PCC	32	\$2,619	Overlay
County Line Road	Walnut Street	Hill Grove Avenue	AC	54	\$12,074	Mill + Fabric + O/L
County Line Road	47th Street	County Line Court	AC	88	\$2,821	Overlay
County Line Road	First Street	Third Street	AC	65	\$27,391	Mill + O/L
County Line Road	Third Street	Fourth Street	AC	66	\$11,933	Mill + O/L
County Line Road	Sixth Street	Seventh Street	AC	58	\$18,274	Mill + Fabric + O/L
County Line Road	Ninth Street	Pamela Circle	AC	72	\$9,360	Fabric + O/L
Warren Court	West End	Madison Street	AC	37	\$6,452	Mill + Fabric + O/L
Walnut Street	Oak Street	County Line Road	AC	70	\$16,458	Fabric + O/L
Chicago Avenue	Park Avenue	Elm Street	PCC	55	\$13,920	Overlay
Chicago Avenue	Oak Street	Countyline Road	PCC	56	\$12,877	Overlay
Chestnut Street	Monroe Street	Thurlow Street	PCC	29	\$89,587	Reconstruct: PCC
Hinsdale Avenue	Stough Street	Quincy Street	PCC	60	\$8,620	Overlay
Hinsdale Avenue	Monroe Street	Madison Street	PCC	45	\$9,145	Overlay
Hinsdale Avenue	Vine Street	Grant Street	PCC	72	\$11,379	Overlay
Fifth Street	Grant Street	Lincoln Street	AC	27	\$85,982	Reconstruct: AC
Eighth Street	Vine Street	Grant Street	PCC	78	\$6,036	Overlay

## Village of Hinsdale Five Year Pavement Rehabilitation Plan \$1M Annual Budget

<u>Street Name</u>	<u>From</u>	<u>To</u>	<u>Surf. Type</u>	<u>PCI Prior</u>	<u>Estimated Cost</u>	<u>Rehabilitation Strategy</u>
Eighth Street	Lincoln Street	Washington Street	PCC	28	\$128,879	Reconstruct: PCC
Eighth Street	Garfield Street	Park Avenue	PCC	32	\$12,698	Overlay
Eighth Street	Park Avenue	Elm Street	PCC	35	\$12,451	Overlay
Eighth Street	Elm Street	Oak Street	PCC	42	\$12,641	Overlay
Eighth Street	Oak Street	County Line Road	PCC	31	\$12,147	Overlay
Railroad Avenue	West End	AC/PCC Change	AC	27	\$32,487	Reconstruct: AC

**2006 Total: \$991,107**

**Plan Year: 2007**

Quincy Street	North Street	Hickory Street	AC	28	\$16,006	Mill + Fabric + O/L
Bruner Street	Eighth Street	Ninth Street	AC	29	\$22,218	Mill + Fabric + O/L
Thurlow Street	Chicago Avenue	Chestnut Street	PCC	31	\$11,711	Overlay
Stough Street	Quincy Street	Maple Street	AC	30	\$21,762	Mill + Fabric + O/L
Vine Street	Ogden Avenue	Center Street	AC	30	\$9,126	Mill + Fabric + O/L
Vine Street	AC/PCC Change	Ayres Street	PCC	30	\$3,796	Overlay
Vine Street	Ayres Street	AC/PCC Change	PCC	28	\$50,294	Reconstruct: PCC
Vine Street	Hinsdale Avenue	Second Street	AC	30	\$17,375	Mill + Fabric + O/L
Washington Street	Ogden Avenue	Minneola	PCC	29	\$286,049	Reconstruct: PCC
Washington Street	Minneola Street	Lansing Street	PCC	35	\$4,365	Overlay
Giddings Avenue	North End	58th Street	AC	50	\$7,371	Mill + Fabric + O/L
Jefferson Street	Fuller Road	Minneola Street	AC	35	\$27,975	Mill + Fabric + O/L
Center Street	Lincoln Street	Washington Street	PCC	31	\$9,775	Overlay
Lansing Street	Lincoln Street	Washington Street	PCC	33	\$9,338	Overlay
Ayres Street	Grant Street	AC/PCC Change	PCC	29	\$91,159	Reconstruct: PCC
Hickory Street	Adams Street	Monroe Street	AC	34	\$22,920	Mill + Fabric + O/L
Bobolink Drive	County Line Road	Phillippa Street	AC	30	\$11,162	Mill + Fabric + O/L
Walnut Street	Adams Street	Monroe Street	AC	29	\$22,464	Mill + Fabric + O/L
Walnut Street	Clay Street	Vine Street	PCC	31	\$6,529	Overlay
Walnut Street	Lincoln Street	Washington Street	AC	28	\$14,040	Mill + Fabric + O/L
Walnut Street	Park Avenue	Elm Street	AC	32	\$23,026	Mill + Fabric + O/L
Chestnut Street	Bodin Street	Monroe Street	PCC	31	\$6,282	Overlay
Chestnut Street	Thurlow Street	Madison Street	PCC	29	\$105,304	Reconstruct: PCC
Hinsdale Avenue	Jackson Street	Stough Street	PCC	33	\$4,612	Overlay
First Street	Garfield Street	Blaine Street	AC	28	\$16,632	Mill + Fabric + O/L
First Street	County Line Road	Princeton Road	AC	35	\$23,026	Mill + Fabric + O/L
Second Street	Thurlow Street	Madison Street	AC	30	\$9,126	Mill + Fabric + O/L
Second Street	Vine Street	Grant Street	AC	30	\$12,320	Mill + Fabric + O/L
Fourth Street	Park Avenue	Elm Street	AC	35	\$19,586	Mill + Fabric + O/L
Sixth Street	Clay Street	Vine Street	PCC	34	\$7,402	Overlay
Seventh Street	Grant Street	Lincoln Street	PCC	30	\$4,536	Overlay

## Village of Hinsdale Five Year Pavement Rehabilitation Plan \$1M Annual Budget

<u>Street Name</u>	<u>From</u>	<u>To</u>	<u>Surf. Type</u>	<u>PCI Prior</u>	<u>Estimated Cost</u>	<u>Rehabilitation Strategy</u>
Pamela Circle	West End	County Line Road	AC	33	\$17,269	Mill + Fabric + O/L
Pamela Circle	County Line Road	East End	AC	32	\$19,094	Mill + Fabric + O/L
Charleston Road	West End	County Line Road	AC	28	\$66,042	Mill + Fabric + O/L
<b>2007 Total:</b>					<b>\$999,692</b>	

### Plan Year: 2008

Maumell Street	Garfield Avenue	York Road	PCC	47	\$9,718	Overlay
Quincy Street	Chestnut Street	Town Place	PCC	51	\$8,902	Overlay
Bruner Street	Ninth Street	S End	AC	44	\$17,971	Mill + Fabric + O/L
Adams Street	North End	North Street	AC	33	\$31,344	Mill + Fabric + O/L
Monroe Street	Eighth Street	Ninth Street	AC	34	\$20,930	Mill + Fabric + O/L
Madison Street	Canterbury Court	Bonnie Brae Road	AC	58	\$12,531	Mill + Fabric + O/L
Thurlow Street	Eighth Street	Ninth Street	AC	54	\$22,675	Mill + Fabric + O/L
Jackson Street	Eighth Street	South End	AC	52	\$20,393	Mill + Fabric + O/L
Grant Street	Center Street	Ayres Street	PCC	39	\$17,727	Overlay
Lincoln Street	Fifth Street	Sixth Street	AC	41	\$10,249	Mill + Fabric + O/L
Washington Street	Third Street	Fourth Street	AC	44	\$13,829	Mill + Fabric + O/L
Radcliffe Way	Ravine Road	Hickory Street	PCC	35	\$12,944	Overlay
Park Avenue	Chicago Avenue	First Street	AC	36	\$21,973	Mill + Fabric + O/L
Park Avenue	Third Street	Fourth Street	AC	57	\$16,567	Mill + Fabric + O/L
Park Avenue	Eighth Street	Ninth Street	PCC	53	\$12,451	Overlay
Oak Street	Third Street	Fourth Street	AC	48	\$18,884	Mill + Fabric + O/L
Oak Street	Fourth Street	Woodside Avenue	AC	49	\$11,408	Mill + Fabric + O/L
Oak Street	Woodside Avenue	Sixth Street	AC	45	\$13,689	Mill + Fabric + O/L
Jefferson Street	North End	Fuller Road	AC	42	\$27,167	Mill + Fabric + O/L
Princeton Road	N End	First Street	AC	34	\$24,746	Mill + Fabric + O/L
Columbia Avenue	First Street	Third Street	AC	43	\$22,464	Mill + Fabric + O/L
Wedgewood Court	West End	Madison Street	AC	49	\$6,318	Mill + Fabric + O/L
North Street	West End	Quincy Street	AC	52	\$5,300	Mill + Fabric + O/L
Center Street	Vine Street	Grant Street	PCC	41	\$7,915	Overlay
Center Street	Grant Street	Lincoln Street	PCC	46	\$7,535	Overlay
Ayres Street	Vine Street	Grant Street	PCC	47	\$7,402	Overlay
Hickory Street	Bruner Street	Adams Street	AC	43	\$22,675	Mill + Fabric + O/L
Hickory Street	Monroe Street	Madison Street	AC	47	\$27,273	Mill + Fabric + O/L
Hickory Street	Madison Street	Clay Street	AC	58	\$15,444	Mill + Fabric + O/L
The Lane	Oak Street	County Line Road	PCC	36	\$12,641	Overlay
Ravine Road	Garfield Street	Radcliffe Way	PCC	44	\$8,161	Overlay
Ravine Road	Radcliffe Way	Forest Road	PCC	50	\$8,655	Overlay
Ravine Road	Elm Street	Oak Street (W)	PCC	56	\$14,691	Overlay
Ravine Road	Oak Street (E)	County Line Road	PCC	42	\$7,402	Overlay



## Village of Hinsdale Five Year Pavement Rehabilitation Plan \$1M Annual Budget

<u>Street Name</u>	<u>From</u>	<u>To</u>	<u>Surf. Type</u>	<u>PCI Prior</u>	<u>Estimated Cost</u>	<u>Rehabilitation Strategy</u>
Walnut Street	Bruner Street	Adams Street	AC	51	\$14,953	Mill + Fabric + O/L
Walnut Street	Madison Street	Clay Street	PCC	35	\$8,655	Overlay
Walnut Street	Garfield Street	Park Avenue	AC	45	\$22,780	Mill + Fabric + O/L
Chicago Avenue	Orchard Place	Oak Street	PCC	50	\$6,602	Overlay
Chestnut Street	Quincy Street	Bruner Street	PCC	43	\$6,093	Overlay
First Street	Sharron Court	Springlake Avenue	AC	46	\$11,267	Mill + Fabric + O/L
First Street	Springlake Avenue	Columbia Avenue	AC	57	\$10,600	Mill + Fabric + O/L
Second Street	Monroe Street	Thurlow Street	AC	33	\$11,408	Mill + Fabric + O/L
Second Street	Madison Street	Clay Street	AC	46	\$13,935	Mill + Fabric + O/L
Third Street	Park Avenue	Elm Street	AC	56	\$24,640	Mill + Fabric + O/L
Third Street	Elm Street	Oak Street	AC	56	\$10,460	Mill + Fabric + O/L
Third Street	Springlake Avenue	Columbia Avenue	AC	45	\$15,304	Mill + Fabric + O/L
Fourth Street	Jackson Street	Stough Street	PCC	42	\$5,599	Overlay
Fourth Street	Madison Street	Clay Street	AC	39	\$13,689	Mill + Fabric + O/L
Fourth Street	Grant Street	Lincoln Street	AC	47	\$13,584	Mill + Fabric + O/L
Fourth Street	Lincoln Street	Washington Street	AC	47	\$14,040	Mill + Fabric + O/L
Fourth Street	Washington Street	Garfield Street	AC	39	\$19,094	Mill + Fabric + O/L
Fourth Street	Elm Street	Oak Street	AC	46	\$17,269	Mill + Fabric + O/L
Fifth Street	Park Avenue	Fourth Street	AC	58	\$8,880	Mill + Fabric + O/L
Sixth Street	Jackson Street	Stough Street	AC	55	\$10,811	Mill + Fabric + O/L
Sixth Street	Vine Street	Grant Street	PCC	54	\$8,029	Overlay
Seventh Street	Jackson Street	Stough Street	PCC	57	\$6,093	Overlay
Seventh Street	Stough Street	Quincy Street	PCC	45	\$5,922	Overlay
Seventh Street	Monroe Street	Thurlow Street	AC	55	\$11,618	Mill + Fabric + O/L
Seventh Street	Thurlow Street	Madison Street	AC	44	\$10,249	Mill + Fabric + O/L
Seventh Street	Taft Road	Wilson Lane	AC	39	\$16,168	Mill + Fabric + O/L
Eighth Street	Bruner Street	Adams Street	PCC	39	\$6,225	Overlay
Eighth Place	Madison Street	East End	AC	41	\$12,074	Mill + Fabric + O/L
Ninth Street	Garfield Street	Park Avenue	AC	43	\$22,113	Mill + Fabric + O/L
58th Street	Garfield Street	Giddings Avenue	AC	52	\$10,144	Mill + Fabric + O/L
58th Street	Giddings Avenue	East End	AC	58	\$22,113	Mill + Fabric + O/L
59th Street	Grant Street	Washington Street	AC	51	\$25,250	Mill + Fabric + O/L
59th Street	Washington Street	Garfield Street	AC	56	\$24,268	Mill + Fabric + O/L
Garfield Avenue	Maumell Street	Minneola Street	PCC	45	\$7,915	Overlay
Garfield Avenue	Minneola Street	The Lane	PCC	44	\$7,782	Overlay
Ninth Street	Grant Street	Lincoln Street	PCC	57	\$6,966	Overlay

**2008 Total: \$982,562**

## Village of Hinsdale Five Year Pavement Rehabilitation Plan \$1M Annual Budget

<u>Street Name</u>	<u>From</u>	<u>To</u>	<u>Surf. Type</u>	<u>PCI Prior</u>	<u>Estimated Cost</u>	<u>Rehabilitation Strategy</u>
<b>Plan Year: 2009</b>						
Bruner Street	Seventh Street	Eighth Street	PCC	69	\$12,318	Overlay
Bodin Street	Fourth Street	Sixth Street	PCC	73	\$12,394	Overlay
Bodin Street	Seventh Street	Eighth Street	PCC	88	\$12,261	Overlay
Madison Street	Glendale Avenue	Birchwood Road	AC	63	\$10,489	Mill + O/L
Madison Street	Birchwood Road	Briargate Terrace	AC	59	\$12,531	Mill + Fabric + O/L
Madison Street	Briargate Terrace	Canterbury Court	AC	64	\$10,489	Mill + O/L
Thurlow Street	Second Street	Fourth Street	AC	56	\$20,849	Mill + Fabric + O/L
Stough Street	Railroad Avenue	Hinsdale Avenue	PCC	19	\$20,432	Reconstruct: PCC
Vine Street	Eighth Street	South End	AC	64	\$12,633	Mill + O/L
Clay Street	Walnut Street	Maple Street	AC	56	\$18,428	Mill + Fabric + O/L
Clay Street	Fourth Street	Sixth Street	PCC	65	\$14,747	Overlay
Lincoln Street	Lansing Street	AC/PCC Change	PCC	19	\$72,298	Reconstruct: PCC
Lincoln Street	Ayres Street	North Street	AC	24	\$90,314	Reconstruct: AC
Lincoln Street	Hickory Street	Walnut Street	AC	57	\$18,322	Mill + Fabric + O/L
Park Avenue	Hickory Street	Walnut Street	AC	64	\$15,043	Mill + O/L
Park Avenue	First Street	Third Street	AC	61	\$20,919	Mill + O/L
Park Avenue	Fifth Street	Sixth Street	AC	67	\$10,782	Mill + O/L
Oak Street	Chicago Avenue	First Street	AC	65	\$21,212	Mill + O/L
Oak Street	First Street	Third Street	AC	66	\$15,983	Mill + O/L
Justina Street	Ravine Road	Hickory Street	AC	57	\$20,042	Mill + Fabric + O/L
Mills Street	Hickory Street	Walnut Street	PCC	73	\$9,718	Overlay
Hickory Street	Justina Street	Mills Street	AC	65	\$8,579	Mill + O/L
Bobolink Drive	Phillippa Street	Justina Street	AC	23	\$53,928	Reconstruct: AC
Hampton Place	Elm Street	Oak Street	PCC	68	\$17,500	Overlay
Walnut Street	County Line Road	Phillippa Street	AC	62	\$9,343	Mill + O/L
Walnut Street	Phillippa Street	Justina Street	AC	63	\$8,667	Mill + O/L
Maple Street	Bruner Street	Adams Street	AC	77	\$8,710	Fabric + O/L
Chestnut Street	Stough Street	Quincy Street	AC	61	\$9,255	Mill + O/L
Hinsdale Avenue	Quincy Street	Bruner Street	PCC	70	\$8,699	Overlay
Hinsdale Avenue	Bruner Street	Adams Street	PCC	62	\$8,883	Overlay
Third Street	Garfield Street	Park Avenue	AC	54	\$22,569	Mill + Fabric + O/L
Third Street	Hillcrest Avenue	Princeton Road	PCC	62	\$8,351	Overlay
Fourth Street	Garfield Street	Park Avenue	AC	65	\$21,771	Mill + O/L
Fifth Street	Garfield Street	Park Avenue	AC	61	\$23,122	Mill + O/L
Sixth Street	Quincy Street	Bruner Street	AC	58	\$11,267	Mill + Fabric + O/L
Bittersweet Lane	Princeton Road	East End	AC	67	\$10,606	Mill + O/L
Seventh Street	Quincy Street	Bruner Street	PCC	63	\$5,979	Overlay
Seventh Street	Bruner Street	Adams Street	PCC	65	\$6,169	Overlay
Seventh Street	Bodin Street	Monroe Street	AC	56	\$10,951	Mill + Fabric + O/L
Seventh Street	Park Avenue	Elm Street	PCC	87	\$12,451	Overlay

## Village of Hinsdale Five Year Pavement Rehabilitation Plan \$1M Annual Budget

<u>Street Name</u>	<u>From</u>	<u>To</u>	<u>Surf. Type</u>	<u>PCI Prior</u>	<u>Estimated Cost</u>	<u>Rehabilitation Strategy</u>
Eighth Street	Washington Street	Garfield Street	PCC	10	\$168,172	Reconstruct: PCC
Ninth Street	Washington Street	Garfield Street	AC	55	\$19,340	Mill + Fabric + O/L
59th Street	Old Surrey Road	Grant Street	AC	57	\$26,465	Mill + Fabric + O/L
Town Place	Stough Street	Bruner Street	AC	58	\$21,762	Mill + Fabric + O/L
Mills Street	The Lane	Ravine Road	AC	75	\$13,910	Fabric + O/L
Ninth Street	Vine Street	Grant Street	AC	62	\$15,278	Mill + O/L
Washington Street	N End	59th Street	AC	60	\$19,332	Mill + O/L

**2009 Total: \$1,003,261**

**Plan Year: 2010**

Bodin Street	Ninth Street	Section Change	AC	11	\$21,658	Reconstruct: AC
Grant Street	Third Street	Fourth Street	AC	25	\$80,351	Reconstruct: AC
Lincoln Street	AC/PCC Change	Ayres Street	AC	1	\$50,896	Reconstruct: AC
Lincoln Street	Maple Street	Chicago Avenue	AC	24	\$87,282	Reconstruct: AC
Garfield Street	55th Street	57th Street	AC	25	\$327,619	Reconstruct: AC
Princeton Road	Third Street	Woodside Avenue	AC	3	\$159,836	Reconstruct: AC
Eighth Street	Madison Street	Clay Street	AC	7	\$133,630	Reconstruct: AC
Hill Grove Avenue	Oak Street	County Line Road	AC	6	\$137,745	Reconstruct: AC

**2010 Total: \$999,017**

**Five Year Total (2005 Dollars): \$4,975,639**

## Village of Hinsdale Five Year Pavement Rehabilitation Plan Backlog Elimination

<u>Street Name</u>	<u>From</u>	<u>To</u>	<u>Surf. Type</u>	<u>PCI Before</u>	<u>Estimated Cost</u>	<u>Rehabilitation Strategy</u>
<b>Plan Year: 2006</b>						
Monroe Street	North Street	Hickory Street	AC	57	\$16,462	Mill + Fabric + O/L
Monroe Street	Hickory Street	Walnut Street	AC	49	\$17,094	Mill + Fabric + O/L
Madison Street	Warren Court	Morris Lane	AC	31	\$15,549	Mill + Fabric + O/L
Stough Street	Chestnut Street	Town Place	AC	37	\$17,831	Mill + Fabric + O/L
Stough Street	Town Place	Railroad Avenue	AC	61	\$8,403	Mill + Fabric + O/L
Vine Street	Second Street	Third Street	AC	27	\$60,642	Reconstruct: AC
Grant Street	Fourth Street	Fifth Street	AC	37	\$19,235	Mill + Fabric + O/L
Grant Street	Fifth Street	Sixth Street	PCC	86	\$5,485	Overlay
Grant Street	55th Street	57th Street	AC	28	\$62,500	Mill + Fabric + O/L
Lincoln Street	Ogden Avenue	Center Street	PCC	33	\$10,268	Overlay
Lincoln Street	Center Street	Lansing Street	PCC	35	\$8,902	Overlay
Lincoln Street	North Street	Hickory Street	AC	63	\$13,779	Mill + O/L
Lincoln Street	Chicago Avenue	Chestnut Street	AC	34	\$7,617	Mill + Fabric + O/L
Garfield Street	Chicago Avenue	Hinsdale Avenue	AC	59	\$8,708	Mill + Fabric + O/L
Garfield Street	First Street	Third Street	AC	52	\$26,244	Mill + Fabric + O/L
Garfield Street	Third Street	Fourth Street	AC	65	\$13,289	Mill + O/L
Garfield Street	Fourth Street	Fifth Street	AC	70	\$15,960	Fabric + O/L
Garfield Street	Fifth Street	Sixth Street	AC	60	\$9,967	Mill + O/L
Garfield Street	Sixth Street	Ulm Place	AC	45	\$13,041	Mill + Fabric + O/L
Garfield Street	Ulm Place	Seventh Street	AC	35	\$13,446	Mill + Fabric + O/L
Garfield Street	Seventh Street	Eighth Street	AC	44	\$26,285	Mill + Fabric + O/L
Garfield Street	Eighth Street	Ninth Street	AC	65	\$22,069	Mill + O/L
Garfield Street	Ninth Street	55th Street	AC	65	\$22,103	Mill + O/L
Elm Street	Hampton Place	Hickory Street	PCC	32	\$2,619	Overlay
County Line Road	Walnut Street	Hill Grove Avenue	AC	54	\$12,074	Mill + Fabric + O/L
County Line Road	47th Street	County Line Court	AC	88	\$2,821	Overlay
County Line Road	First Street	Third Street	AC	65	\$27,391	Mill + O/L
County Line Road	Third Street	Fourth Street	AC	66	\$11,933	Mill + O/L
County Line Road	Sixth Street	Seventh Street	AC	58	\$18,274	Mill + Fabric + O/L
County Line Road	Ninth Street	Pamela Circle	AC	72	\$9,360	Fabric + O/L
Warren Court	West End	Madison Street	AC	37	\$6,452	Mill + Fabric + O/L
Walnut Street	Oak Street	County Line Road	AC	70	\$16,458	Fabric + O/L
Chicago Avenue	Park Avenue	Elm Street	PCC	55	\$13,920	Overlay
Chicago Avenue	Oak Street	Countyline Road	PCC	56	\$12,877	Overlay
Chestnut Street	Monroe Street	Thurlow Street	PCC	29	\$89,587	Reconstruct: PCC
Hinsdale Avenue	Stough Street	Quincy Street	PCC	60	\$8,620	Overlay
Hinsdale Avenue	Monroe Street	Madison Street	PCC	45	\$9,145	Overlay
Hinsdale Avenue	Vine Street	Grant Street	PCC	72	\$11,379	Overlay
Fifth Street	Grant Street	Lincoln Street	AC	27	\$85,982	Reconstruct: AC
Eighth Street	Vine Street	Grant Street	PCC	78	\$6,036	Overlay

## Village of Hinsdale Five Year Pavement Rehabilitation Plan Backlog Elimination

<u>Street Name</u>	<u>From</u>	<u>To</u>	<u>Surf. Type</u>	<u>PCI Before</u>	<u>Estimated Cost</u>	<u>Rehabilitation Strategy</u>
Eighth Street	Lincoln Street	Washington Street	PCC	28	\$128,879	Reconstruct: PCC
Eighth Street	Garfield Street	Park Avenue	PCC	32	\$12,698	Overlay
Eighth Street	Park Avenue	Elm Street	PCC	35	\$12,451	Overlay
Eighth Street	Elm Street	Oak Street	PCC	42	\$12,641	Overlay
Eighth Street	Oak Street	County Line Road	PCC	31	\$12,147	Overlay
Railroad Avenue	West End	AC/PCC Change	AC	27	\$32,487	Reconstruct: AC
<b>2006 Total:</b>					<b>\$991,107</b>	

**Plan Year: 2007**

Ayres Street	Grant Street	AC/PCC Change	PCC	29	\$91,159	Reconstruct: PCC
Ayres Street	AC/PCC Change	Lincoln Street	AC	10	\$25,990	Reconstruct: AC
Bobolink Drive	County Line Road	Phillippa Street	AC	30	\$68,872	Reconstruct: AC
Bobolink Drive	Phillippa Street	Justina Street	AC	28	\$53,928	Reconstruct: AC
Bodin Street	Chicago Avenue	Chestnut Street	PCC	15	\$191,747	Reconstruct: PCC
Bodin Street	Pavement Change	Ninth Street	AC	14	\$69,522	Reconstruct: AC
Bodin Street	Ninth Street	Section Change	AC	16	\$21,658	Reconstruct: AC
Bruner Street	Eighth Street	Ninth Street	AC	29	\$137,095	Reconstruct: AC
Bruner Street	Chestnut Street	Town Place	PCC	13	\$147,425	Reconstruct: PCC
Charleston Road	West End	County Line Road	AC	28	\$407,504	Reconstruct: AC
Chestnut Street	Clay Street	Vine Street	PCC	14	\$183,575	Reconstruct: PCC
Chestnut Street	Bruner Street	Adams Street	PCC	18	\$103,104	Reconstruct: PCC
Chestnut Street	Adams Street	Bodin Street	PCC	12	\$105,304	Reconstruct: PCC
Chestnut Street	Thurlow Street	Madison Street	PCC	29	\$105,304	Reconstruct: PCC
Chestnut Street	Madison Street	Clay Street	PCC	17	\$110,333	Reconstruct: PCC
Clay Street	North End	North Street	AC	24	\$136,445	Reconstruct: AC
County Line Court	County Line Road	East End	AC	26	\$75,470	Reconstruct: AC
Eighth Street	Madison Street	Clay Street	AC	11	\$133,630	Reconstruct: AC
Eighth Street	Clay Street	Vine Street	AC	14	\$68,223	Reconstruct: AC
Eighth Street	Washington Street	Garfield Street	PCC	12	\$168,172	Reconstruct: PCC
First Street	Garfield Street	Blaine Street	AC	28	\$102,626	Reconstruct: AC
First Street	Blaine Street	Park Avenue	AC	24	\$109,290	Reconstruct: AC
Fourth Street	Quincy Street	Bruner Street	PCC	24	\$98,074	Reconstruct: PCC
Fourth Street	Bruner Street	Adams Street	PCC	21	\$104,047	Reconstruct: PCC
Fourth Street	Adams Street	Bodin Street	PCC	14	\$104,047	Reconstruct: PCC
Fourth Street	Bodin Street	Monroe Street	PCC	19	\$100,903	Reconstruct: PCC
Fourth Street	Monroe Street	Thurlow Street	PCC	10	\$103,104	Reconstruct: PCC
Fourth Street	Thurlow Street	Madison Street	PCC	11	\$107,190	Reconstruct: PCC
Fuller Road	County Line Road	Phillippa Street	AC	22	\$73,204	Reconstruct: AC
Fuller Road	Phillippa Street	Justina Street	AC	8	\$78,835	Reconstruct: AC
Giddings Avenue	58th Street	South End	AC	6	\$145,542	Reconstruct: AC
Grant Street	Ayres Street	North Street	PCC	11	\$132,966	Reconstruct: PCC

## Village of Hinsdale Five Year Pavement Rehabilitation Plan Backlog Elimination

<u>Street Name</u>	<u>From</u>	<u>To</u>	<u>Surf. Type</u>	<u>PCI Before</u>	<u>Estimated Cost</u>	<u>Rehabilitation Strategy</u>
Harding Road	Woodland Avenue	South End	AC	21	\$181,927	Reconstruct: AC
Hill Grove Avenue	Oak Street	County Line Road	AC	10	\$137,745	Reconstruct: AC
Lincoln Street	Lansing Street	AC/PCC Change	PCC	20	\$72,298	Reconstruct: PCC
Lincoln Street	AC/PCC Change	Ayres Street	AC	5	\$50,896	Reconstruct: AC
Lincoln Street	Ayres Street	North Street	AC	30	\$90,314	Reconstruct: AC
Maple Street	Garfield Street	Park Avenue	AC	24	\$139,911	Reconstruct: AC
Mills Street	North End	The Lane	AC	1	\$151,389	Reconstruct: AC
Minneola Street	Justina Street	Mills Street	AC	10	\$77,969	Reconstruct: AC
Monroe Street	Fourth Street	Sixth Street	PCC	22	\$186,573	Reconstruct: PCC
Oak Street	Seventh Street	Eighth Street	PCC	29	\$206,207	Reconstruct: PCC
Oakwood Terrace	Birchwood Avenue	South End	AC	23	\$110,889	Reconstruct: AC
Princeton Road	Third Street	Woodside Avenue	AC	7	\$159,836	Reconstruct: AC
Quincy Street	North Street	Hickory Street	AC	28	\$98,761	Reconstruct: AC
Railroad Avenue	AC/PCC Change	Stough Street	PCC	18	\$62,868	Reconstruct: PCC
Ravine Road	Oak Street (W)	Oak Street (E)	AC	17	\$54,145	Reconstruct: AC
Second Street	Vine Street	Grant Street	AC	30	\$76,020	Reconstruct: AC
Sixth Street	Washington Street	Garfield Street	AC	12	\$116,520	Reconstruct: AC
Stough Street	Quincy Street	Maple Street	AC	30	\$134,280	Reconstruct: AC
Stough Street	Railroad Avenue	Hinsdale Avenue	PCC	20	\$20,432	Reconstruct: PCC
Third Street	Oak Street	County Line Road	AC	22	\$61,942	Reconstruct: AC
Ulm Place	Washington Street	Garfield Street	PCC	10	\$164,086	Reconstruct: PCC
Vine Street	Ogden Avenue	Center Street	AC	30	\$56,311	Reconstruct: AC
Vine Street	Hinsdale Avenue	Second Street	AC	30	\$107,207	Reconstruct: AC
Vine Street	AC/PCC Change	Ayres Street	PCC	30	\$62,868	Reconstruct: PCC
Vine Street	Ayres Street	AC/PCC Change	PCC	28	\$50,294	Reconstruct: PCC
Vine Street	Third Street	Fourth Street	AC	19	\$84,466	Reconstruct: AC
Vine Street	Fourth Street	Sixth Street	PCC	22	\$246,443	Reconstruct: PCC
Walker Road	York Road	The Lane	PCC	2	\$100,903	Reconstruct: PCC
Walnut Street	Adams Street	Monroe Street	AC	29	\$138,611	Reconstruct: AC
Walnut Street	Vine Street	Grant Street	AC	1	\$89,448	Reconstruct: AC
Walnut Street	Lincoln Street	Washington Street	AC	28	\$86,632	Reconstruct: AC
Walnut Street	Washington Street	Garfield Street	AC	16	\$118,686	Reconstruct: AC
Washington Street	Ogden Avenue	Minneola	PCC	29	\$286,049	Reconstruct: PCC
Washington Street	Lansing Street	AC/PCC Change	PCC	11	\$37,721	Reconstruct: PCC
Washington Street	Ayres Street	North Street	AC	24	\$95,295	Reconstruct: AC
Woodside Avenue	Springlake Avenue	Columbia Avenue	AC	12	\$145,542	Reconstruct: AC

**2007 Total: \$7,725,770**

**Plan Year: 2008**

Oak Street	Eighth Street	Ninth Street	AC	28	\$139,261	Reconstruct: AC
Pamela Circle	County Line Road	East End	AC	29	\$117,820	Reconstruct: AC
Second Street	Thurlow Street	Madison Street	AC	27	\$56,311	Reconstruct: AC

## Village of Hinsdale Five Year Pavement Rehabilitation Plan Backlog Elimination

<u>Street Name</u>	<u>From</u>	<u>To</u>	<u>Surf. Type</u>	<u>PCI Before</u>	<u>Estimated Cost</u>	<u>Rehabilitation Strategy</u>
Seventh Street	Grant Street	Lincoln Street	PCC	29	\$75,127	Reconstruct: PCC
Walnut Street	Park Avenue	Elm Street	AC	29	\$142,077	Reconstruct: AC
Washington Street	North Street	Hickory Street	AC	29	\$96,595	Reconstruct: AC

**2008 Total: \$627,190**

**Plan Year: 2009**

Adams Street	North End	North Street	AC	30	\$193,406	Reconstruct: AC
Center Street	Lincoln Street	Washington Street	PCC	29	\$161,885	Reconstruct: PCC
Chestnut Street	Bodin Street	Monroe Street	PCC	29	\$104,047	Reconstruct: PCC
First Street	County Line Road	Princeton Road	AC	28	\$142,077	Reconstruct: AC
Fourth Street	Park Avenue	Elm Street	AC	29	\$120,852	Reconstruct: AC
Fuller Road	Justina Street	Mills Street	AC	29	\$68,872	Reconstruct: AC
Garfield Street	55th Street	57th Street	AC	28	\$327,619	Reconstruct: AC
Grant Street	Third Street	Fourth Street	AC	28	\$80,351	Reconstruct: AC
Hickory Street	Adams Street	Monroe Street	AC	28	\$141,427	Reconstruct: AC
Jefferson Street	Fuller Road	Minneola Street	AC	29	\$172,614	Reconstruct: AC
Lincoln Street	Sixth Street	Seventh Street	AC	27	\$136,445	Reconstruct: AC
Lincoln Street	Maple Street	Chicago Avenue	AC	30	\$87,282	Reconstruct: AC
Pamela Circle	West End	County Line Road	AC	27	\$106,557	Reconstruct: AC
Second Street	Monroe Street	Thurlow Street	AC	30	\$70,389	Reconstruct: AC
Thurlow Street	Chicago Avenue	Chestnut Street	PCC	29	\$193,948	Reconstruct: PCC
Walnut Street	Clay Street	Vine Street	PCC	29	\$108,133	Reconstruct: PCC

**2009 Total: \$2,215,904**

**Plan Year: 2010**

Mills Street	North End	Fuller Road	AC	29	\$42,666	Reconstruct: AC
Monroe Street	Eighth Street	Ninth Street	AC	28	\$129,148	Reconstruct: AC
Ninth Street	Allmen Avenue	Vine Street	AC	30	\$60,642	Reconstruct: AC
Park Avenue	Chicago Avenue	First Street	AC	30	\$135,579	Reconstruct: AC
Princeton Road	N End	First Street	AC	28	\$152,689	Reconstruct: AC
Stough Street	Chicago Avenue	Chestnut Street	AC	28	\$128,649	Reconstruct: AC
The Lane	Elm Street	Oak Street	AC	30	\$131,464	Reconstruct: AC
Warren Terrace	Madison Street	North End	AC	30	\$198,171	Reconstruct: AC

**2010 Total: \$979,009**

**Five Year Total (2005 Dollars): \$12,538,978**